

***DXRACER***

**MASTER**

# Master Series Gaming Chair Product Introduction

2025





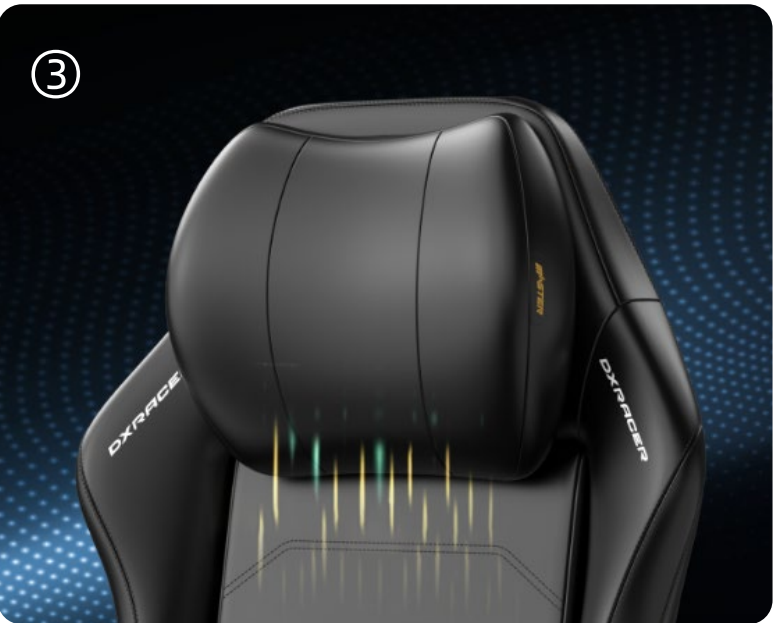
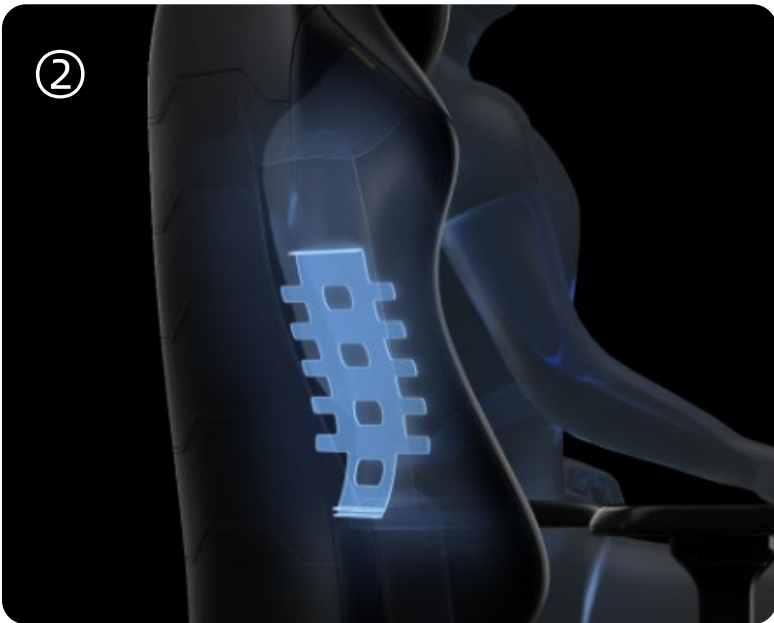
# Core Features



Best Office Gaming Chair

# Premium Office Gaming Chair

- ① Zero-Gravity Mode, Comfort for 8+ Hours
- ② 4D Ergonomic Lumbar Support
- ③ Oversized / Ultra-Plush / Cloud-Like Headrest





Best Office Gaming Chair

# Zero-Gravity Mode, Comfort for 8+ Hours

High-density foam provides optimal ischial support and deep pressure relief for your thighs.

Whether you prefer sitting upright, cross-legged, or reclining, enjoy all-day comfort effortlessly!

8h  
All-Day Comfort



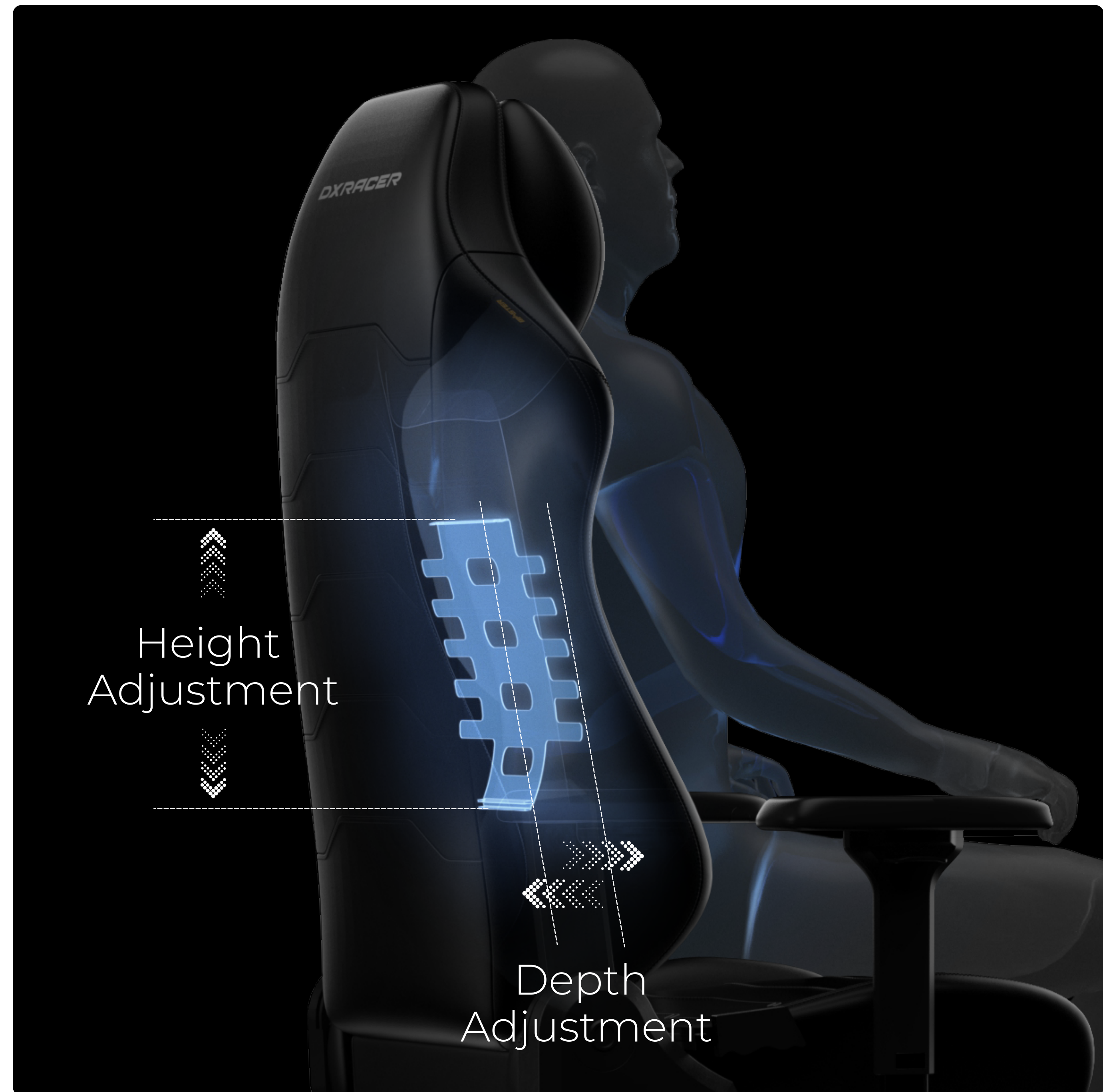


Best Office Gaming Chair

## 4D Ergonomic Lumbar Support Systems

Maintains the spine's natural curvature through 4-way adjustment (up/down/forward/backward), delivering unparalleled comfort that eliminates discomfort from prolonged working hours.

4D  
Lumbar Support



Best Office Gaming Chair

## Slow-Rebound Memory Foam Headrest

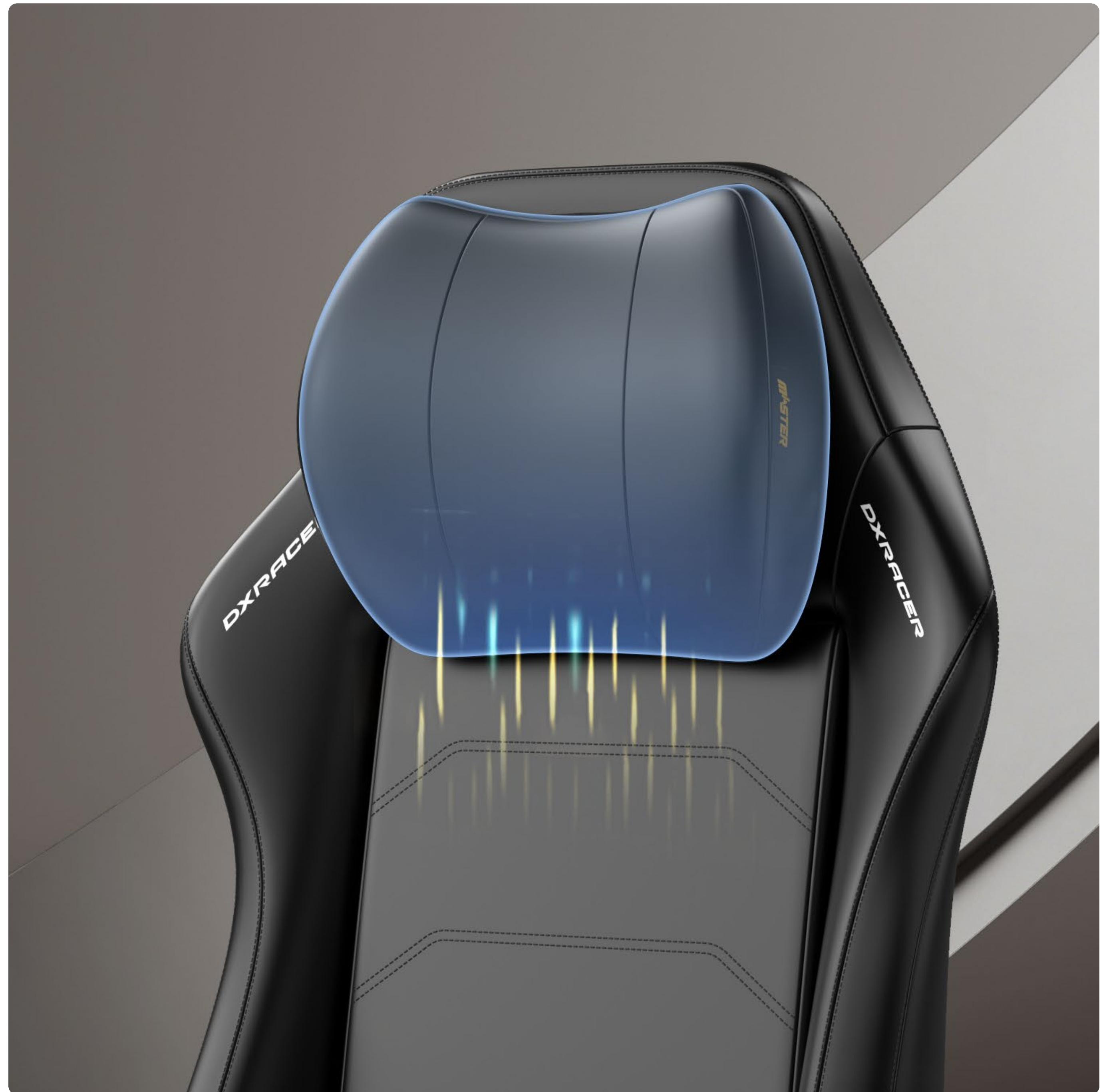
Engineered with ergonomic precision, its height-adjustable design perfectly cradles your neck's natural curve. Ideal for quick side naps or maintaining perfect posture during video calls—no more awkward shoulder hunching.

## 6-Level

Height Adjustment

## 31\*26cm

Over-sized Headrest





The background is an abstract composition of geometric shapes in various shades of brown, tan, and beige. On the left, there are several overlapping, angular shapes that resemble folded paper or architectural elements. A large, smooth, curved shape dominates the upper right portion of the frame. The bottom of the image features a dark, reflective surface that mirrors the shapes above it, creating a sense of depth and symmetry. The overall aesthetic is modern and minimalist.

# Product Design

**MASTER | MASTER SERIES-DESIGN**

**Sofa-Grade Seat Comfort Technology**

# Ergonomic Backrest for Office Use

Elegant and multifunctional, suitable for business offices and esports gaming, a masterpiece of business luxury.

**XL**  
Chair Size

Recommended for users:  
Height >180cm | Weight <125kg





**MASTER | MASTER SERIES-DESIGN**

**Sofa-Grade Seat Comfort Technology**

# Optional Accessories

Customize Your Comfort! Personalize your chair with optional add-ons (like a retractable footrest and mesh-frame seat cushion) to meet your ergonomic needs.

Adjust the backrest to your perfect angle—ideal for unwinding, watching TV, or a quick nap. Activate "Leisure Mode" for ultimate relaxation.

\*Excludes: Mesh seat cushion & footrest (sold separately).





MASTER | MASTER SERIES-DESIGN

Sofa-Grade Seat Comfort Technology

## Experience Sofa-Class Comfort

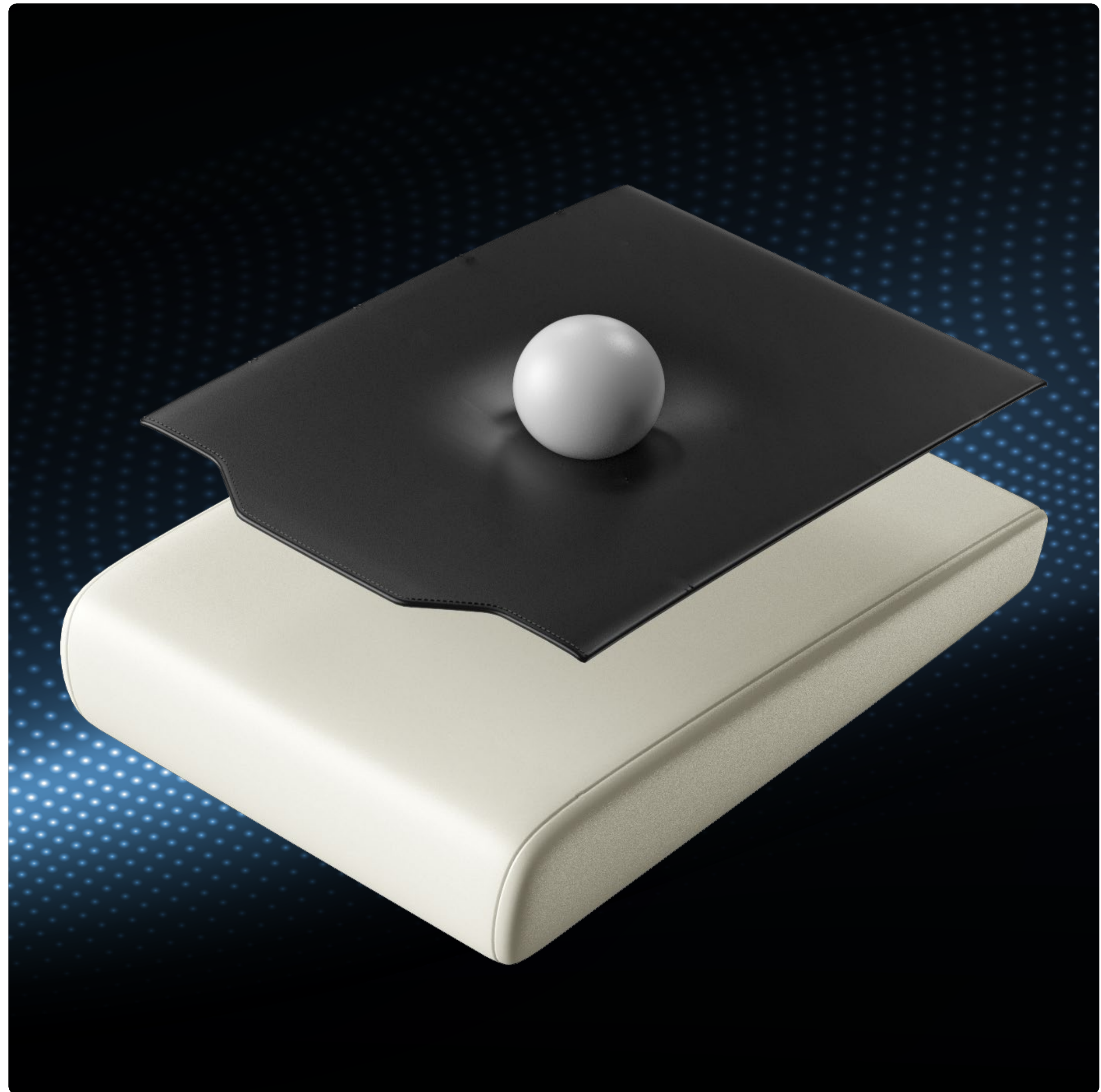
Engineered with ergonomic pressure-relief foam - cold-cured  $60\text{kg/m}^3$  density foam paired with luxury automotive-grade EPU leather (3.1mm premium thickness). The exquisite texture delivers unparalleled tactile quality, offering truly sofa-worthy relaxation.

3.1 mm

Automotive-Grade EPU Synthetic Leather

60  $\text{kg/m}^3$

Ergonomic Pressure-Relief Foam





Sofa-Grade Seat Comfort Technology

# Heavy-Duty Load Capacity with Frog-Design Reinforced Tray

Quickly enable a 15° rocking mode at any desired angle within just one second (variation range <0.3°). You can also sit at your preferred angle and lock the seat in the optimal position for gaming or relaxation.

15°

Leisure Mode



The background features abstract, layered geometric shapes in various shades of brown and tan. A bright white spotlight illuminates the floor, creating a circular glow. The text 'Product Quality' is centered in a white serif font.

# Product Quality



MASTER | MASTER SERIES-QUALITY

Racing-Seat-Grade Quality

# Flagship Build, Beyond Compare

Automotive-Grade Steel Frame: Rock-solid load-bearing capacity  
Racing-Seat Leather: Tough yet supple  
Premium Materials & Craftsmanship: Experience supercar-level comfort instantly





**MASTER | MASTER SERIES-QUALITY**

**Racing-Seat-Grade Quality**

# Racing-Seat Leather

DXRacer's Proprietary EPU Leather for Racing Seats

Engineered to resist wear and wrinkles while staying supple and skin-friendly





MASTER | MASTER SERIES-QUALITY

Racing-Seat-Grade Quality

Automotive-Grade  
Carbon Steel Frame  
Built to Endure,  
Engineered to Last

DXRacer's complete chairs are BIFMA-certified, with a load capacity of up to 125kg.





Strict Quality Control

# Rigorously Enforces Every Quality Standard

Our products strictly comply with international safety standards, undergoing tens of thousands of tests at every stage to deliver absolute safety and peace of mind.

<b>100K</b> Cycles	<b>120K</b> Cycles	<b>120K</b> Cycles
Seat Durability Test	Backrest Reclining Test	Gas Lift Rotary Fatigue Test
<b>98K</b> Cycles	<b>60K</b> Cycles	<b>2M</b> Cycles
Caster Rotary Endurance Test	Armrest Durability Test	Gas Lift Height Adjustment Test

Certified by Accredited Testing Laboratories:





TÜV Level-4 Certified Gas  
Lift-Enhanced Safety  
Assurance

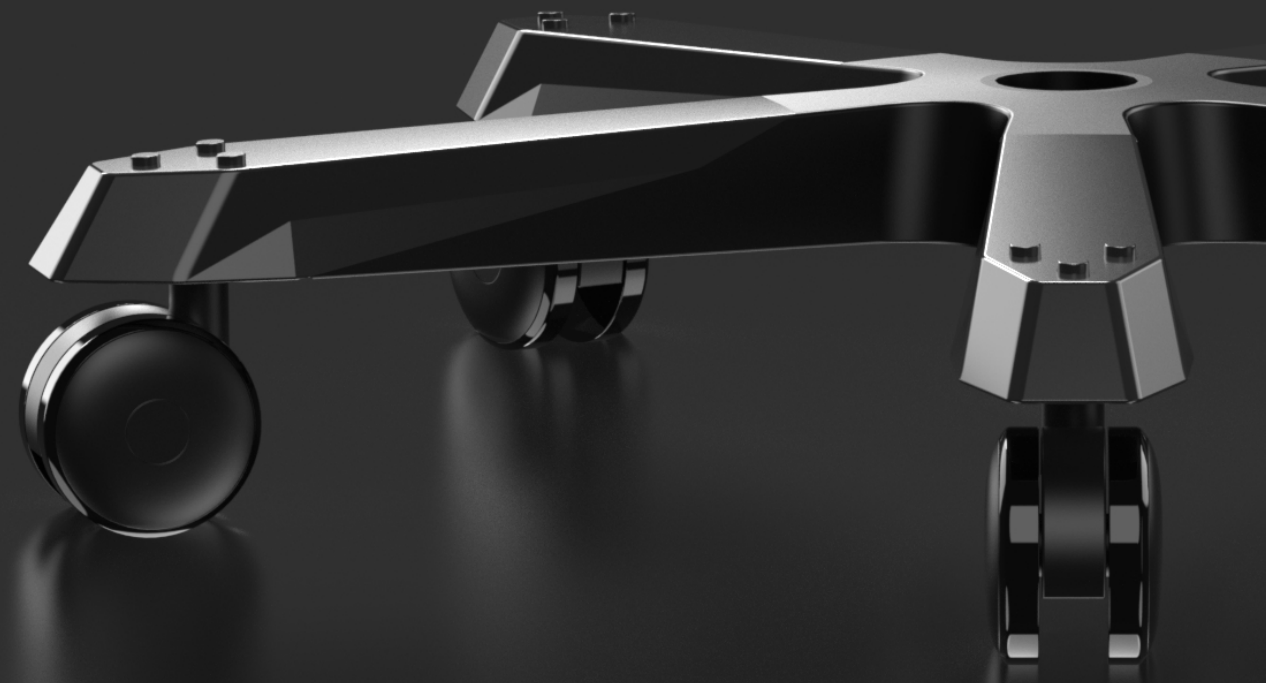
**BIFMA**



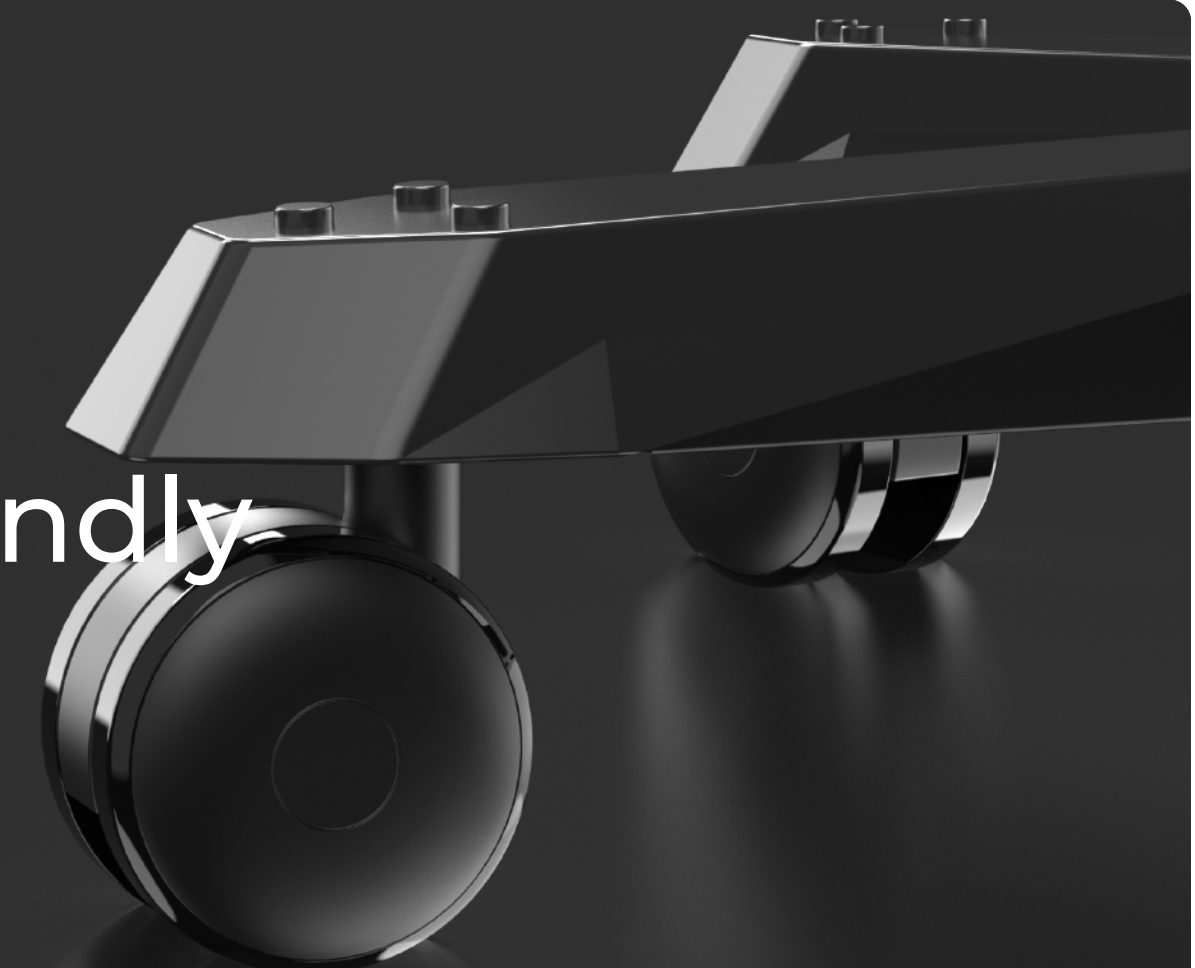
Frog-Design Tray  
with Enhanced  
Stability Support



Extra-Wide Heavy-  
Duty Aluminum  
Chair Base



75mm Oversized  
Casters- Smooth  
Gliding & Floor-Friendly



Discover more at  
DXRACER official website:

 <https://www.dxracer.com/specifications/gaming-chairs/tank>

 <https://www.youtube.com/@dxracer>

***DXRACER***