

DXRACER

MARTIAN

Product Introduction

2025



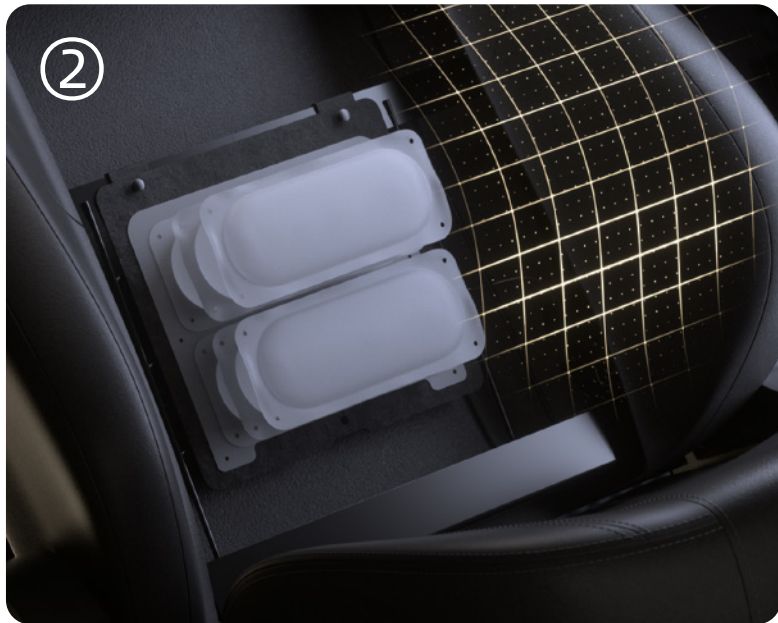
Core Feature

The background of the slide is a dark, almost black, space filled with numerous thin, bright blue lines. These lines, which resemble light rays or data streams, originate from various points and converge towards a central point on the right side of the image, creating a sense of depth and focus. The overall effect is futuristic and high-tech.

Electric Adjustable

The World's First Electric Gaming Chair

- 1. Precise angles from 90° to 135°, one-button control;
- 2. Electric adjustment with 4D zoning for precise lumbar support;
- 3. 5000mAh long-lasting battery. Wired or wireless, your choice.



Electric Adjustable

Electric Adjustable Backrest

1. Multi-angle recline adjustment with one-button control to find your perfect position;
2. 90° working mode / 110° gaming mode / 135° resting mode.

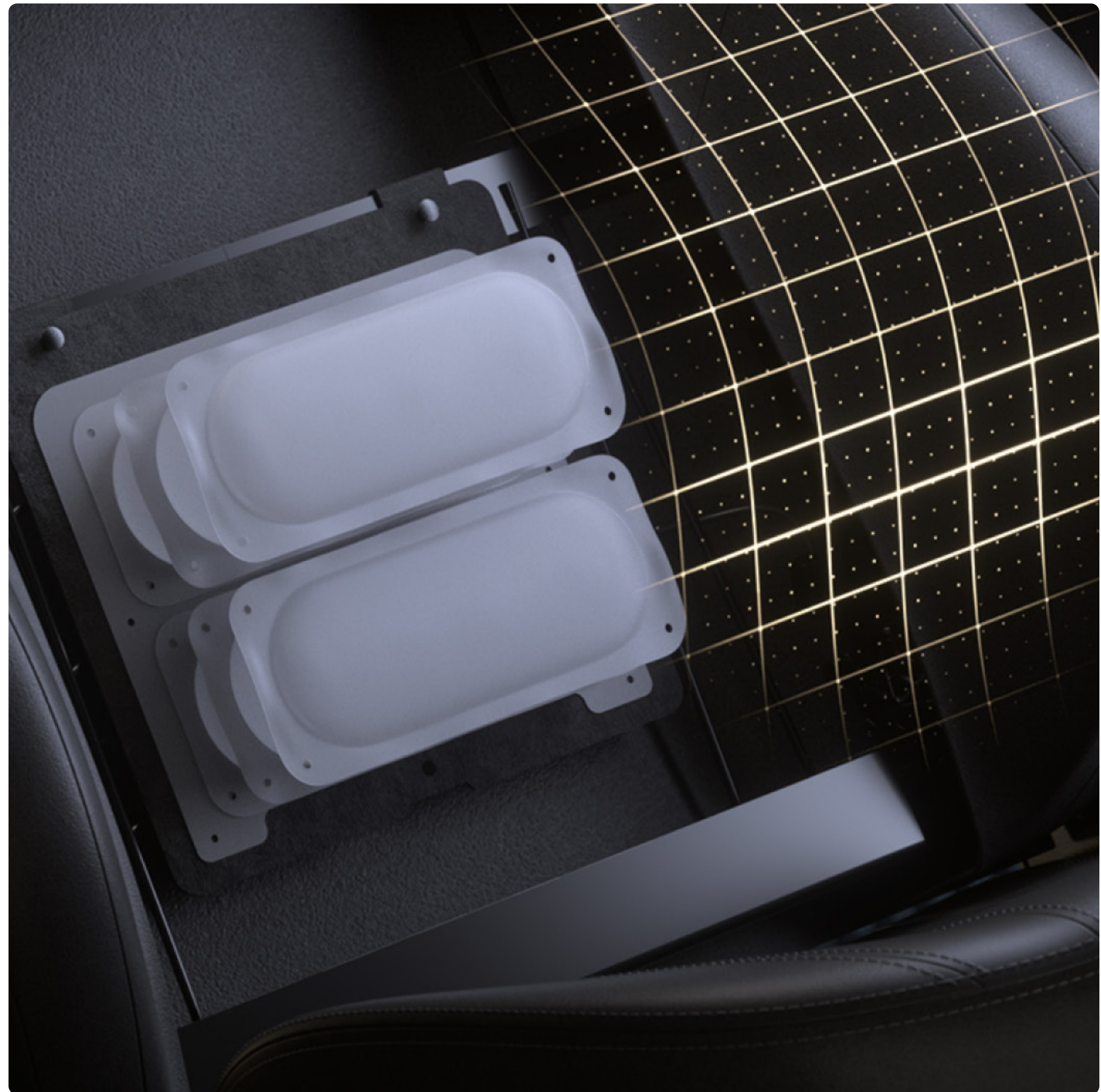


MARTIAN | Core Feature

Electric Adjustable

4D Electric Lumbar Support

The dual built-in airbags work perfectly to provide dynamic and targeted support for the upper and lower lumbar areas.



Electric Adjustable

Long-Lasting Lithium Battery

1. Last over 360 hours on a single charge;
2. 5000mAh Long-Lasting Lithium Battery, Stay powered up without interruptions.

360h

Long Lasting Single Charge

Overheat Protection

Overcharge Protection

Over-discharge Protection

Current Protection



Product Design

The background of the image is a dark, almost black, space filled with numerous thin, bright blue lines. These lines radiate from a central point on the right side of the image, creating a sense of depth and perspective. The lines vary in length and angle, some extending towards the top left, others towards the bottom left, and many others fanning out towards the right edge. The overall effect is reminiscent of a starburst or a light tunnel, giving the image a futuristic and technological feel.

Ergonomic Design

Conforms to the Curve of the Human Body

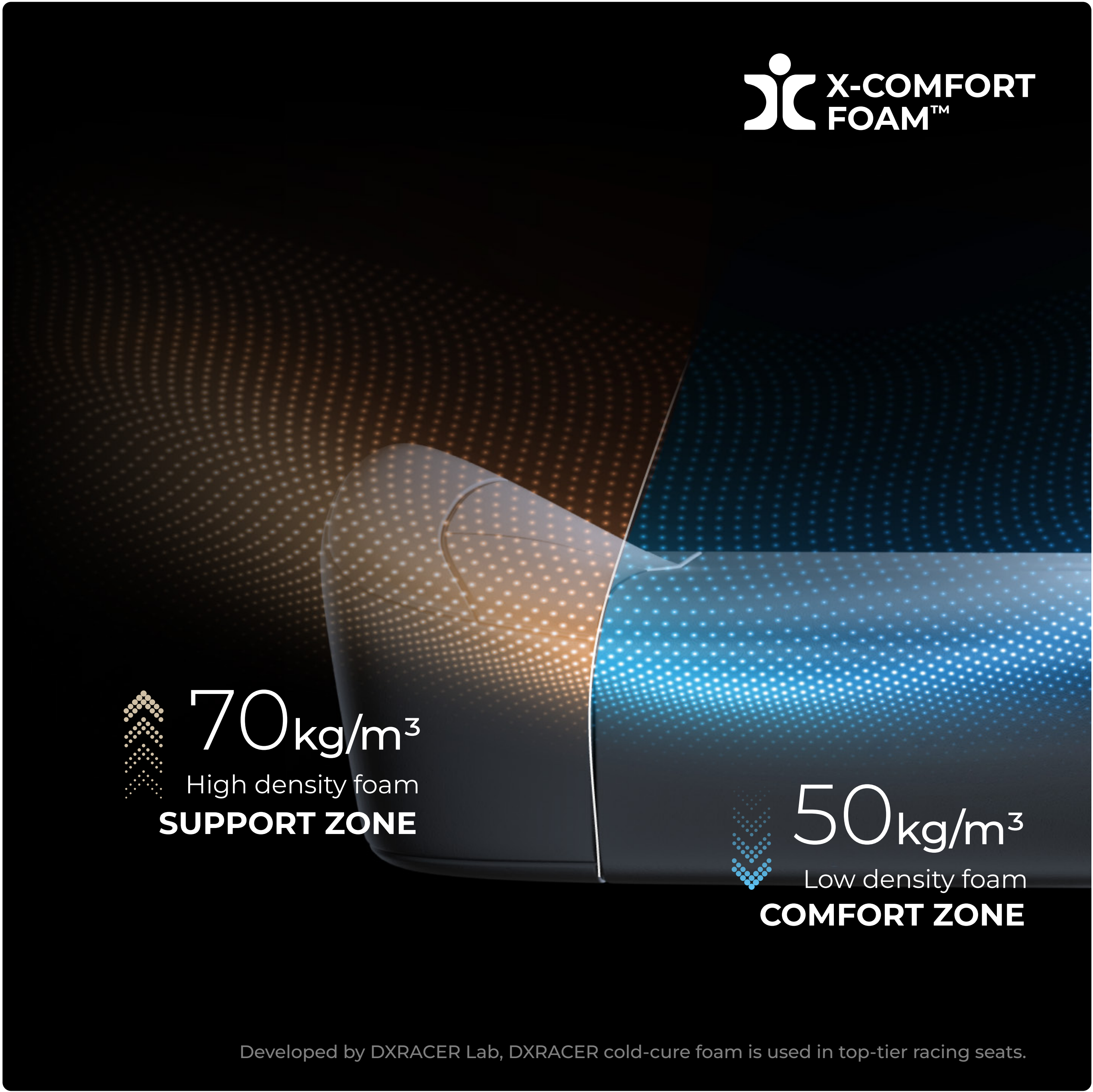
Conforms to the natural curve of the human body,
Accommodates different sitting posture preferences.




Ergonomic Design

X-COMFORT FOAM™ Dual-Density Foam

X-COMFORT FOAM™ tech,
Dual-density foam for ultimate comfort.






70kg/m³

High density foam

SUPPORT ZONE



50kg/m³

Low density foam

COMFORT ZONE

Developed by DXRACER Lab, DXRACER cold-cure foam is used in top-tier racing seats.

Ergonomic Design

4D Replaceable Magnetic Armrests

4D multi-directional adjustment ensures the maximum comfort for your arms.



Ergonomic Design

Magnetic Headrest

Flexible adjustment and perfectly aligns with your neck for deep stress relief.



Product Quality

The background of the image is a dark, deep blue gradient. It features a series of bright, glowing blue lines that originate from the bottom right corner and fan out towards the top left, creating a sense of depth and movement. These lines are interspersed with darker, more subtle rays, giving the overall effect a high-tech or futuristic feel. The text 'Product Quality' is centered horizontally and vertically, rendered in a clean, white, sans-serif typeface.

Exceptional Quality

We are the Standard

Automotive-Grade Steel Frame—Built to Last.
Racing Seat Leather—Durable & Skin-Friendly.
Experience Ultimate Luxury with Supercar Comfort.



Exceptional Quality

Racing Seat Leatherette

Developed by DXRACER Lab, DXRACER EPU leatherette is used in top-tier racing seats, durable & skin-friendly.



MARTIAN | Product Quality

Exceptional Quality

Automotive-Grade Steel Frame

BIFMA certified, stronger and more durable Load up to 275 lbs.



Built Different

Constant Testing Beyond Industrial Standard

Each DXRACER chair has been certified safe and reliable by the BIFMA and EN1335.

100,000 cycles

Seating Durability Test

120,000 cycles

Frame Durability Test

122,800 cycles

Hydraulics Durability Test

108,800 cycles

Caster Durability Test

60,000 cycles

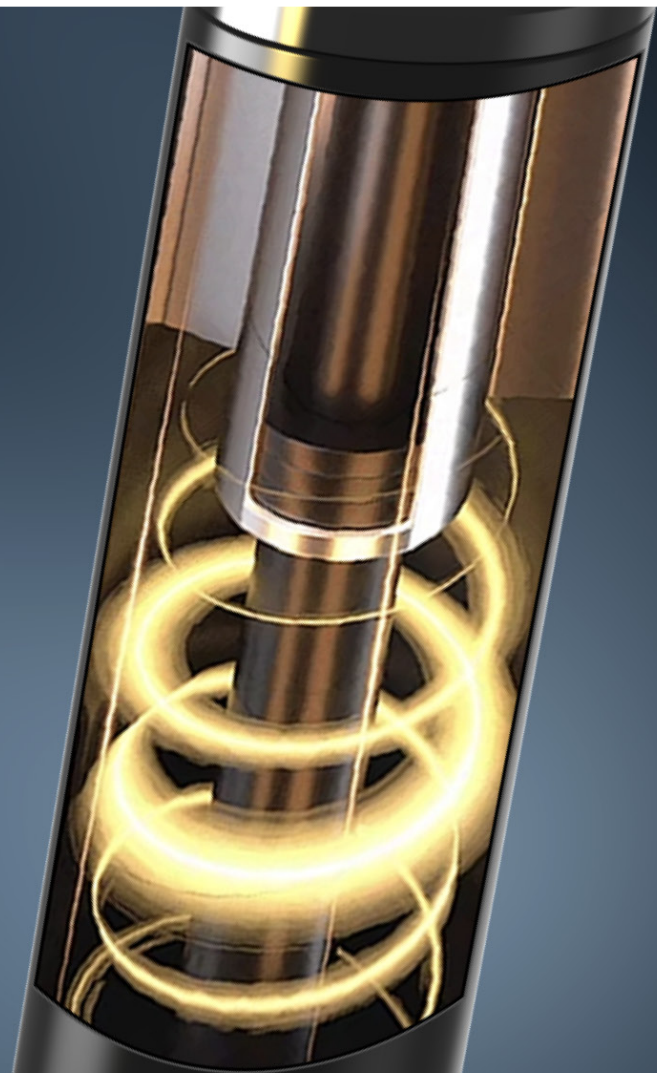
Armrest Durability Test

300,000 cycles

Tilt Mechanism Durability Test



Class 4 Hydraulics Certified by SGS



Multi-functional Tilt Mechanism



Reinforced Aluminum Wheelbase

The same manufacturing processes for high-end vehicle frames



2.36" PU Quiet Swiveling Casters



DXRACER

MARTIAN Pro *New*

New Feature Highlights

Seat Ventilation

Seat Heating

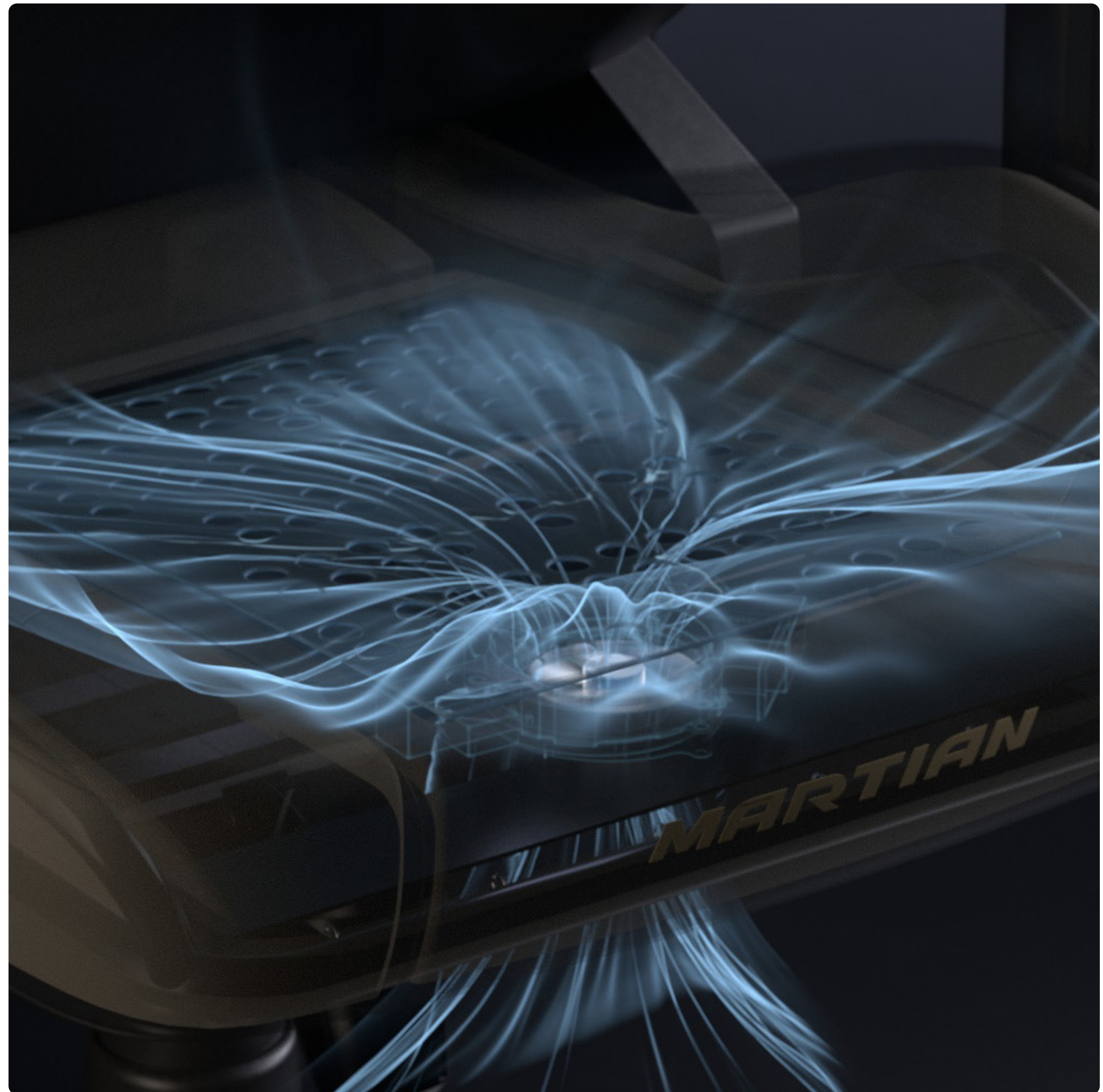
Back Massage



New Feature

Seat Ventilation System

Combining a powerful vortex fan with a unique honeycomb airflow layer, our ventilated seat ensures you stay continuously dry and comfortable.

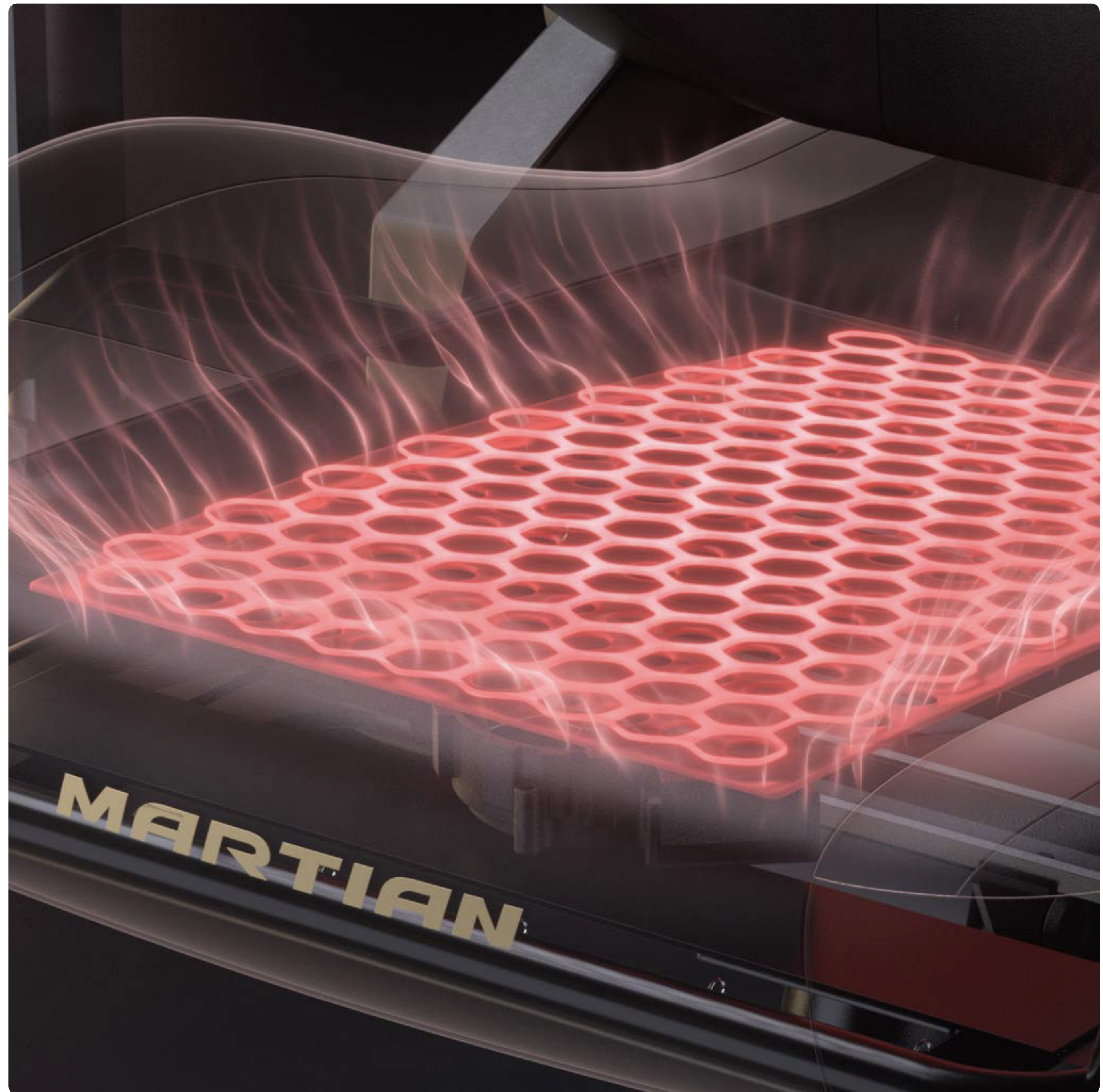


MARTIAN Pro | Latest Upgrades

New Feature

Seat Heating System

3 adjustable levels to suit your needs, 2 seconds fast heating.
Stay warm and comfortable this winter.



MARTIAN Pro | Latest Upgrades

New Feature

Multi-Functional Back Massage

8-point array massage for precise targeting, 6-scientific vibration modes, one button control.

Say goodbye to discomfort from prolonged sitting.



Please visit website for more information.

 <https://www.dxracer.com/pages/gaming-chairs/martian>

 <https://www.youtube.com/@dxracer>

DXRACER