

DXRACER

TANK

Tank Series Gaming Chair Product Introduction

2025



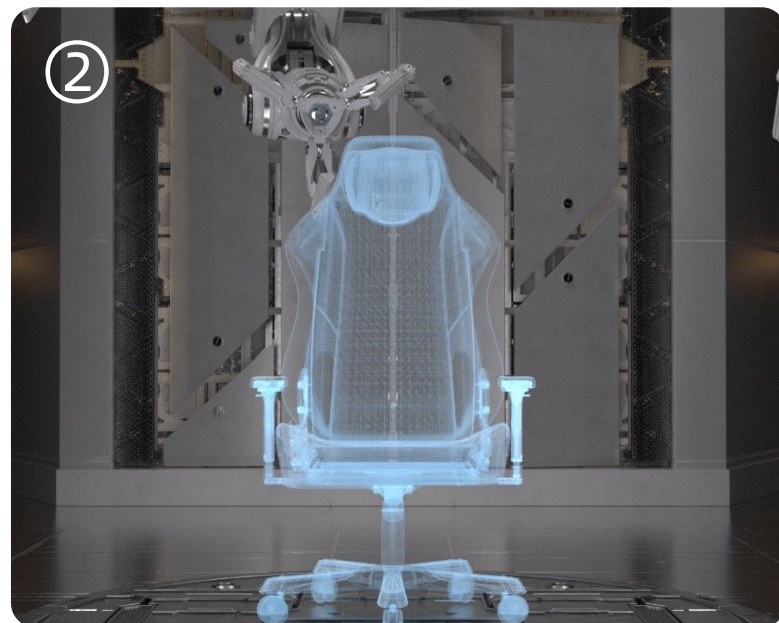


Core Feature

For Big and Tall Gamers

Beyond Conventional - Extra Large Size

1. Spacious and comfortable, fully enlarged
2. A steel beast with tank-level load-bearing capacity.



TANK | TANK SERIES-CORE FEATURES

For Big and Tall Gamers

400 lbs

Exceptional load-bearing capacity

60×90 cm

Extra-large backrest area

80 cm

Extra-large diameter aluminum alloy one-piece die-cast base



For Big and Tall Gamers

Extra-Tall and Extra-Wide Backrest

90 cm

Chair backrest height increased by 11.5 cm to 90 cm

60 cm

Extra 7.3 cm widening on both sides, reaching 60 cm in width



For Big and Tall Gamers

Extra-Large and Extra-Thick Seat Cushion

63 cm

Seat cushion widened by 9 cm to 63 cm, safeguarding every inch of comfort.

12 cm

Extra 2 cm thickness added, eliminating thinness and sagging for plush, full-bodied support.





Product Design

Ergonomic Design

Precisely contours to
the natural curves of
the human spine

Ergonomic design that contours to the body's natural curves,
adapting to various postures with effortless support

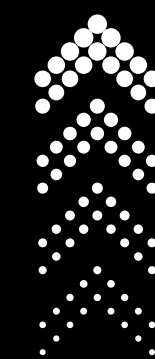


TANK | TANK SERIES-DESIGN

Ergonomic Design

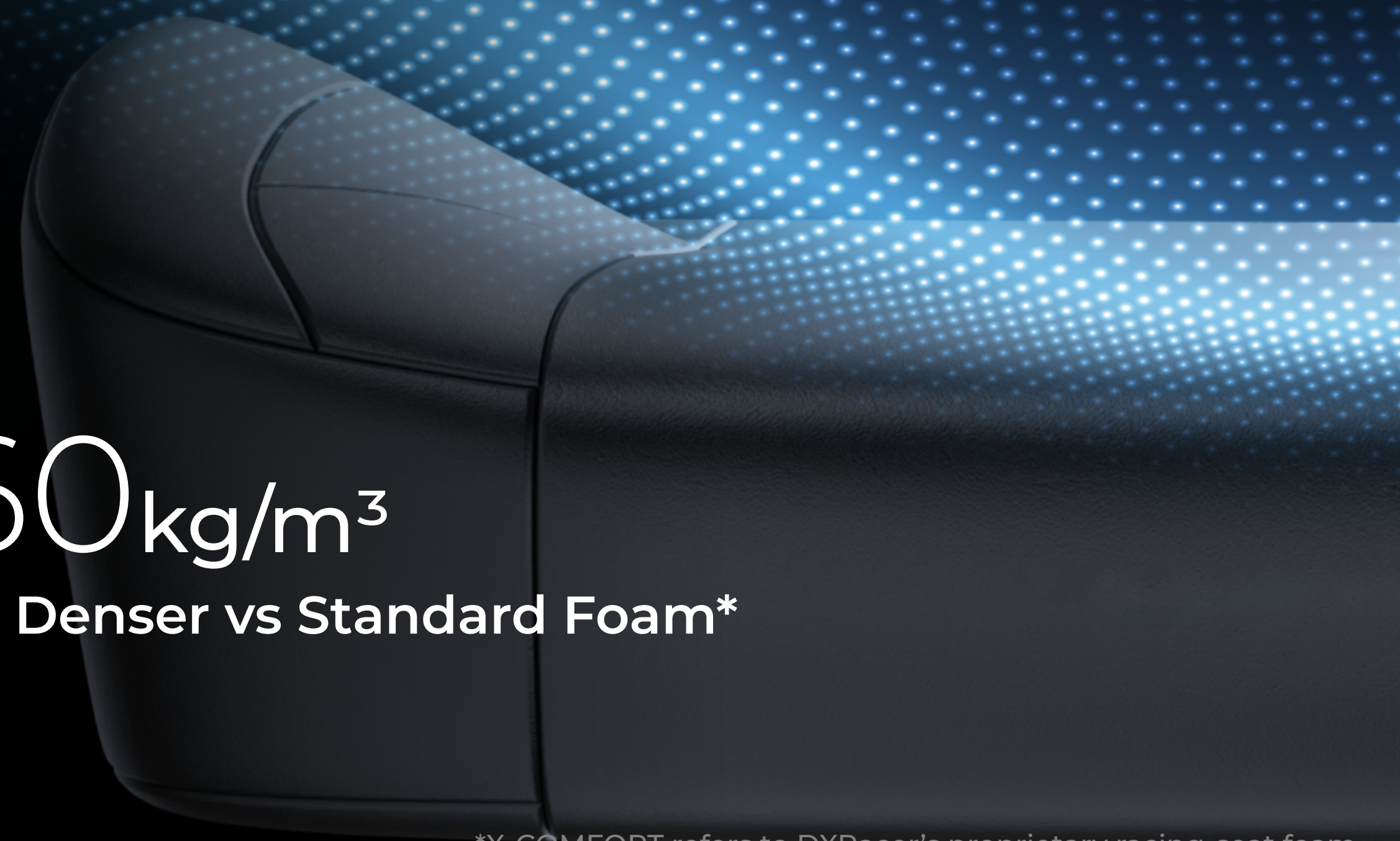
X-COMFORT™ FOAM Technology

DXRacer's proprietary X-COMFORT™ Ultra-Comfort Foam Technology-
features dual-zone distributed padding for superior comfort



60kg/m³
3X Denser vs Standard Foam*

 **X-COMFORT™
FOAM**



X-COMFORT refers to DXRacer's proprietary racing-seat foam technology. The '3X denser' claim compares to generic sofa foams on the market, without targeting specific brands.

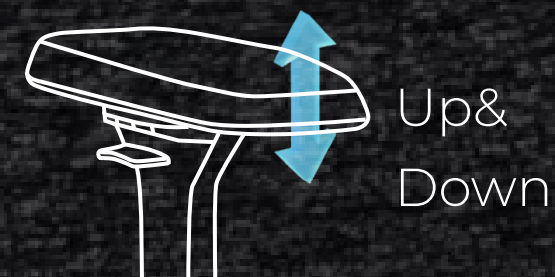
TANK | TANK SERIES-DESIGN

Ergonomic Design

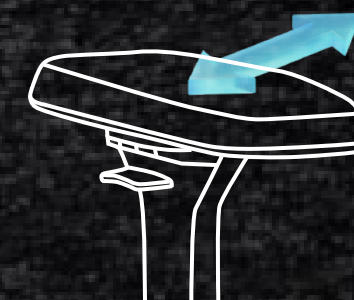
4D Adjustable Armrests

4D Multi-Directional Magnetic Armrests

Adaptive support for all scenarios and postures



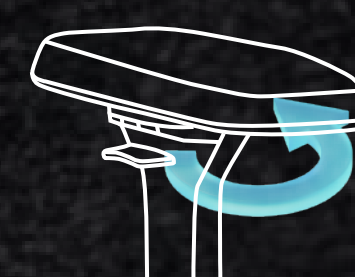
Up &
Down



Left &
Right



Front &
Back



50°
Rotation

TANK | TANK SERIES-DESIGN

Ergonomic Design

Magnetic Headrest/ Lumbar Support

Relieves neck & back pressure
Adjusts flexibly for all body types





Product Quality

TANK | TANK SERIES-QUALITY

Flagship Supercar-Grade Craftsmanship

Flagship Build, Beyond Compare

Automotive-Grade Steel Frame: Rock-solid load-bearing capacity

Racing-Seat Leather: Tough yet supple

Premium Materials & Craftsmanship: Experience supercar-level comfort instantly



TANK | TANK SERIES-QUALITY

Flagship Supercar-Grade Craftsmanship

Racing-Seat Leather

DXRacer's Proprietary EPU Leather for Racing Seats

Engineered to resist wear and wrinkles while staying supple and skin-friendly



TANK | TANK SERIES-QUALITY

Flagship Supercar-Grade Craftsmanship

Automotive-Grade
Carbon Steel Frame
Built to Endure,
Engineered to Last

DXRacer's complete chairs are BIFMA-certified, with a load capacity of up to 300kg.



Strict Quality Control

Rigorously Enforces Every Quality Standard

Our products strictly comply with international safety standards, undergoing tens of thousands of tests at every stage to deliver absolute safety and peace of mind.

100K Cycles	120K Cycles	120K Cycles
Seat Durability Test	Backrest Reclining Test	Gas Lift Rotary Fatigue Test
98K Cycles	60K Cycles	2M Cycles
Caster Rotary Endurance Test	Armrest Durability Test	Gas Lift Height Adjustment Test

Certified by Accredited Testing Laboratories:



TÜV Level 4 Certified Gas Lift

Enhanced Safety Assurance

BIFMA
BUSINESS + INSTITUTIONAL FURNITURE
MANUFACTURERS ASSOCIATION



Industry-Leading Frog-Arm Base

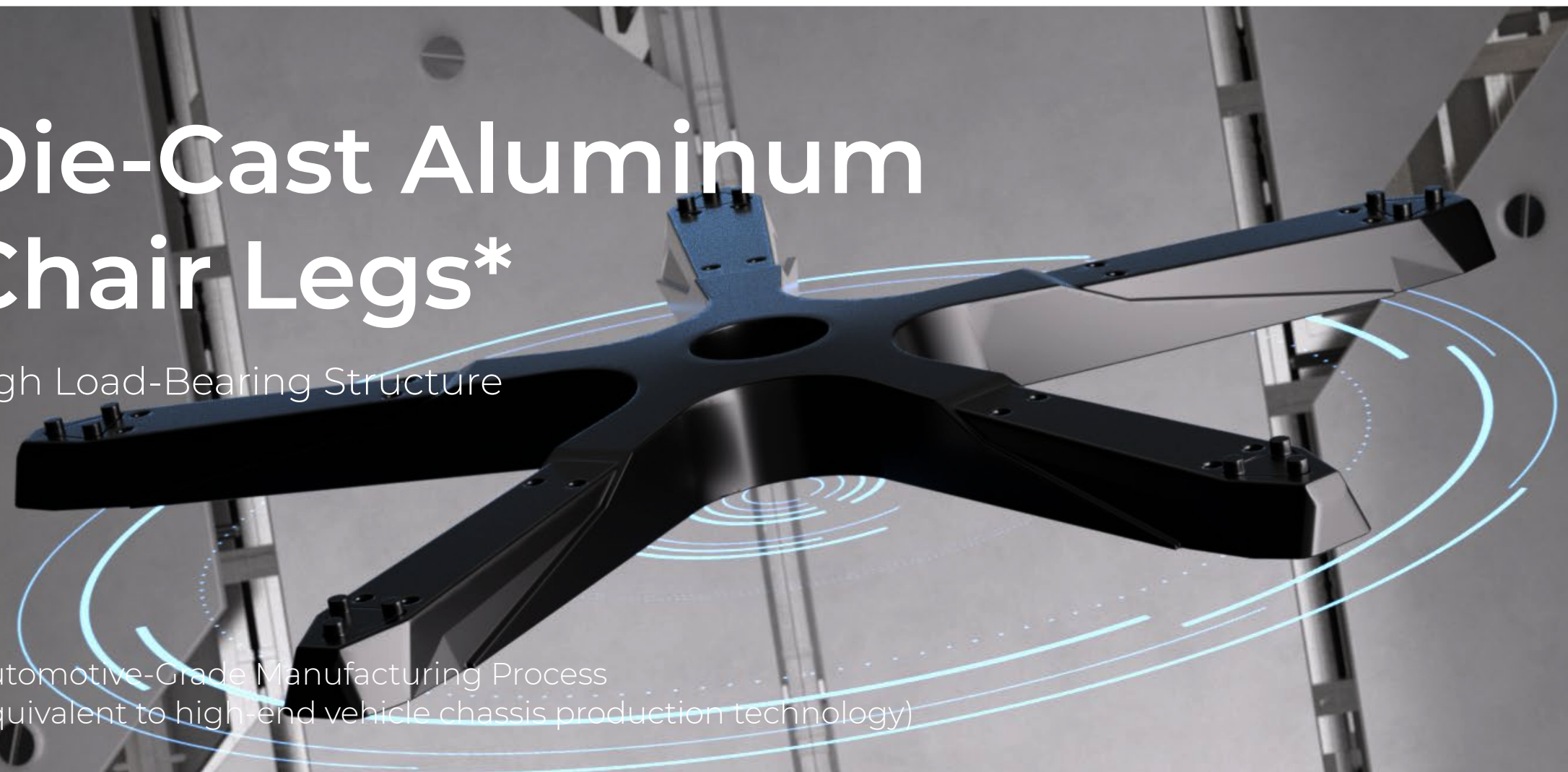
Heavy-Duty Load Capacity | Reinforced Stability



Die-Cast Aluminum Chair Legs*

High Load-Bearing Structure

*Automotive-Grade Manufacturing Process
(Equivalent to high-end vehicle chassis production technology)



75 mm Silent-Thread Casters

Oversized Design | Smooth & Stable Roll



Discover more at
DXRacer official website:

 <https://www.dxracer.com/specifications/gaming-chairs/tank>

 <https://www.youtube.com/@dxracer>

DXRACER