

The DXRACER logo is rendered in a bold, italicized, sans-serif typeface. It is positioned centrally in the upper half of the page, surrounded by a variety of white line-art illustrations of ergonomic chair components such as bases, casters, armrests, and seat cushions.

DXRACER

Product Usage Guide

MARTIAN SERIES

CONTENTS

01 / Seat Functions

Headrest adjustment	03
Armrest adjustment	04
Lumbar support adjustment	05
Seat height adjustment	07
Backrest adjustment	08
Rocking function adjustment	09
Battery charging instructions	10
Safety instructions	12

02 / Battery Specifications

Technical specifications	14
Safety instructions	15

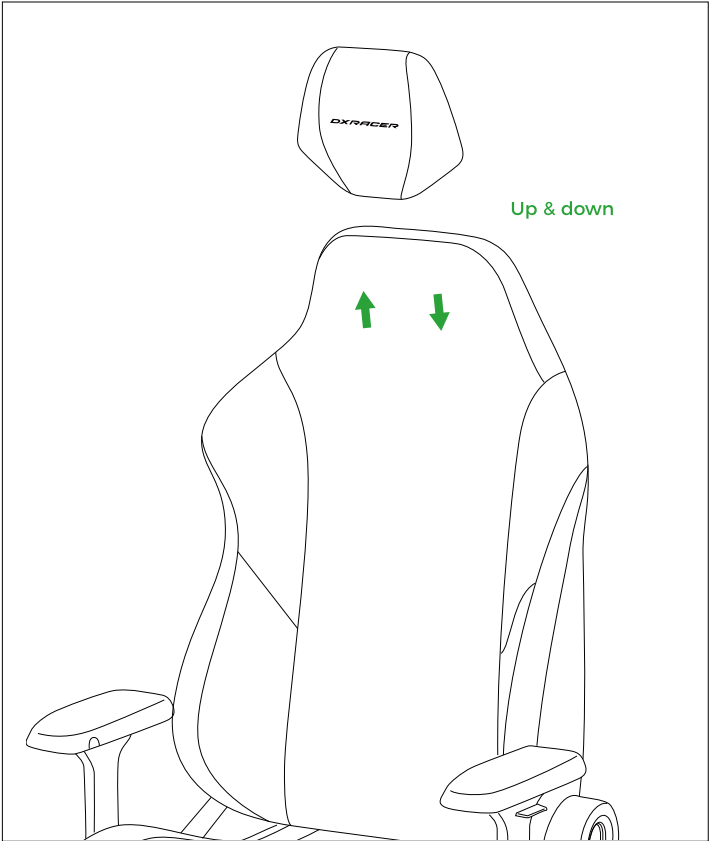
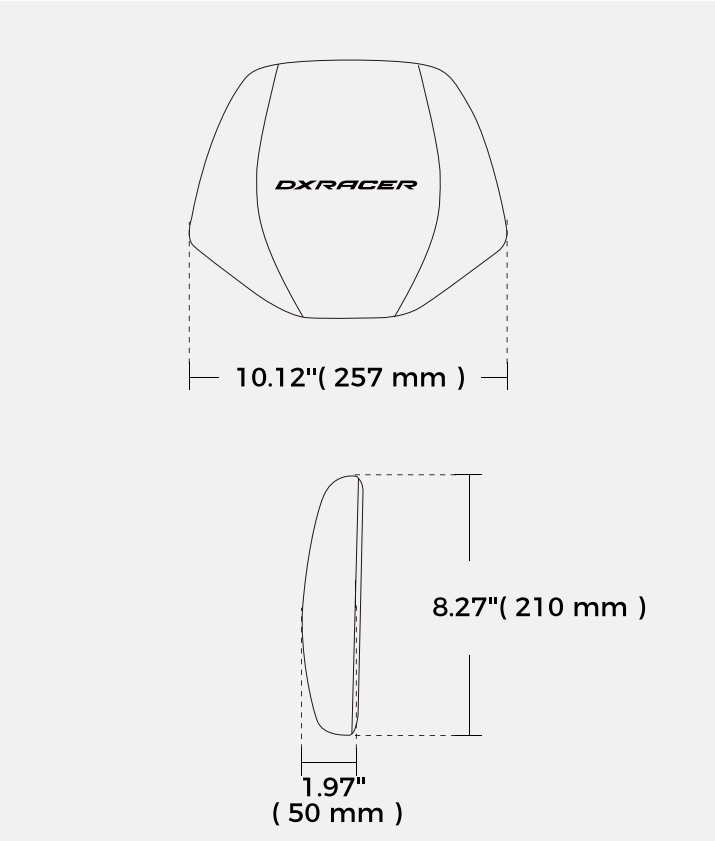
03 / Warranty Policy

What our warranty covers?	17
What our warranty does not cover?	17
How to get our warranty service?	18
How to extend our warranty to up to 5 years for free?	19
Notice	20
Hazardous Materials Table	21

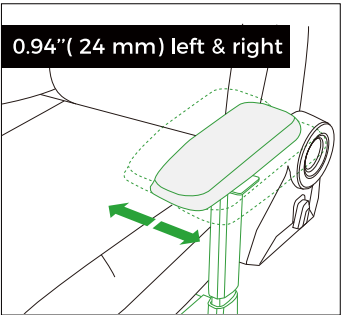
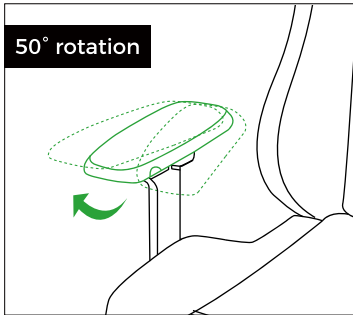
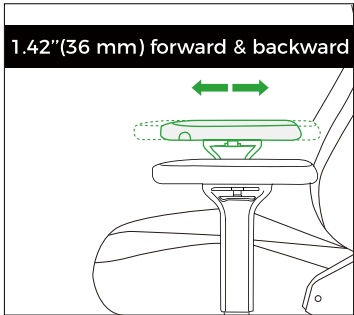
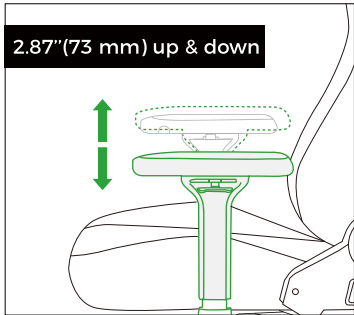
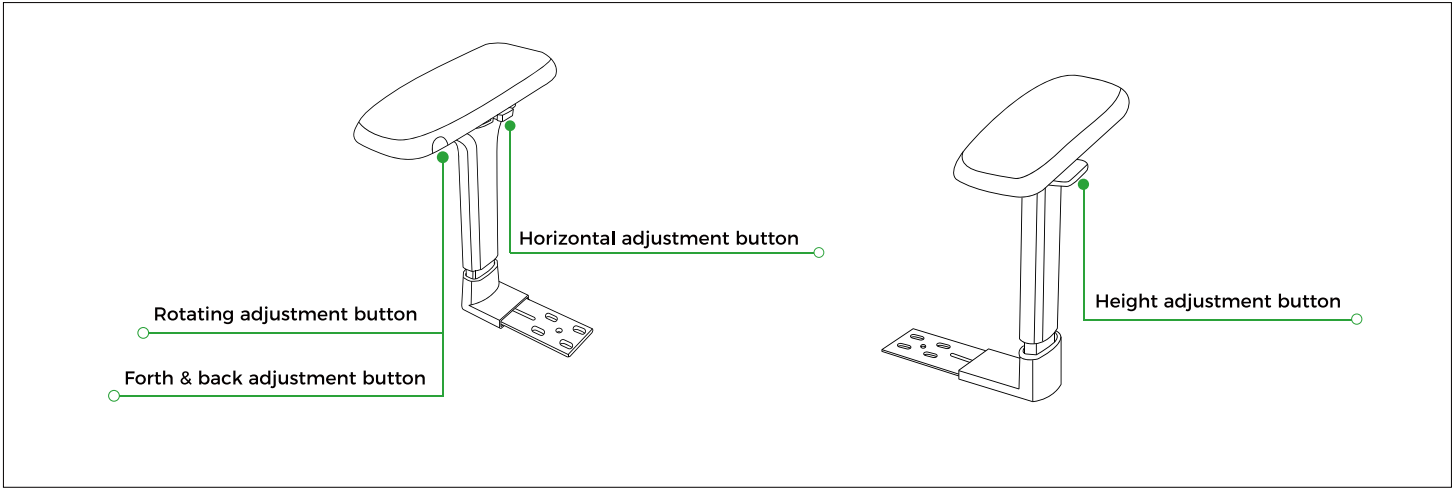
MARTIAN

01 / Seat Functions

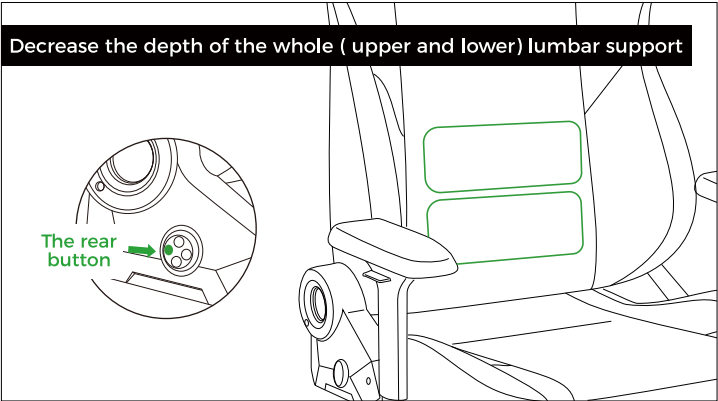
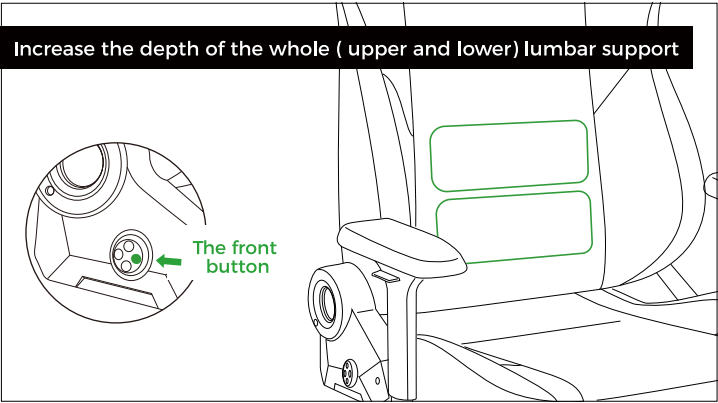
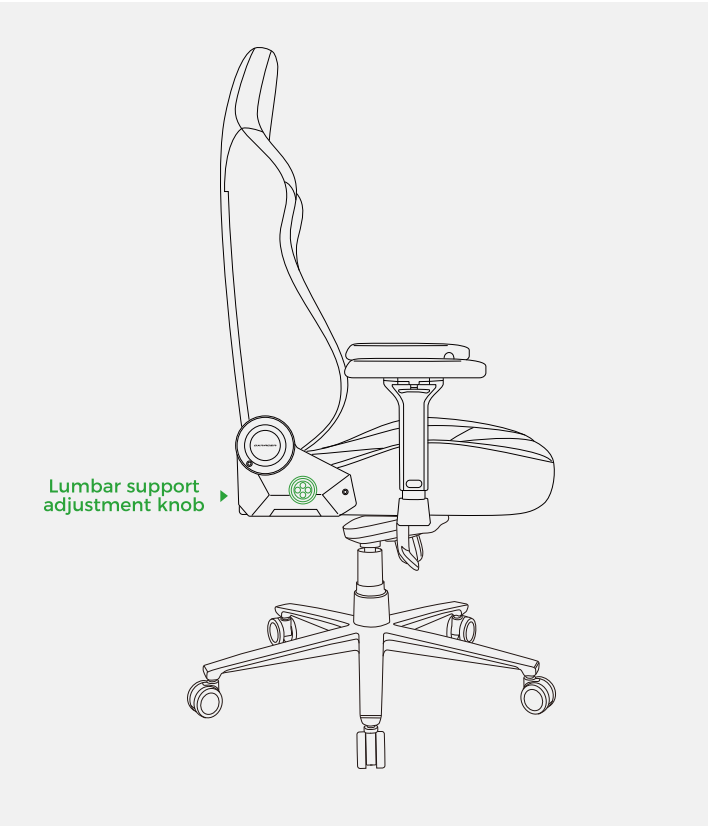
Seat Functions - Headrest adjustment



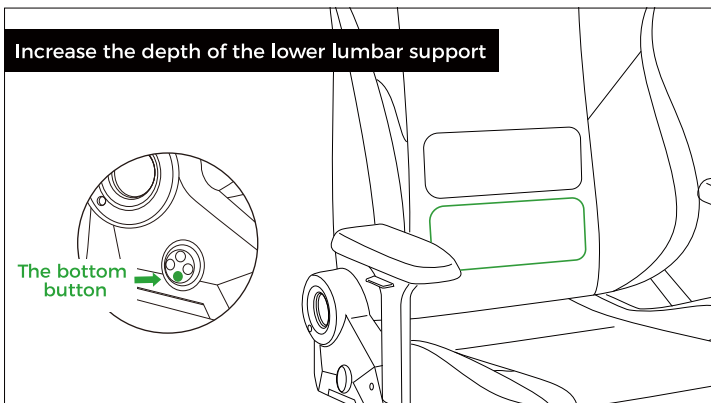
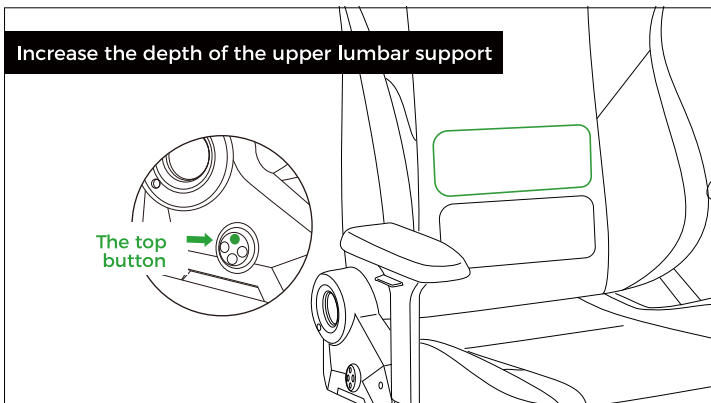
Seat Functions - Armrest adjustment



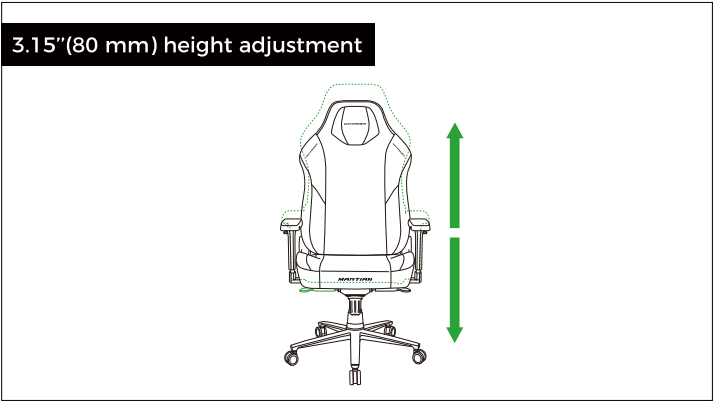
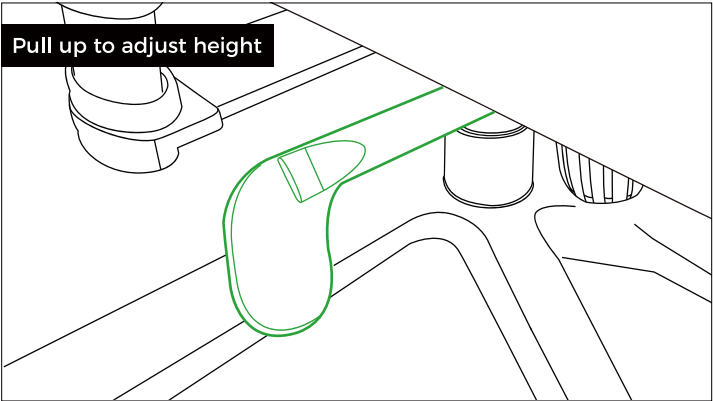
Seat Functions - Lumbar support adjustment



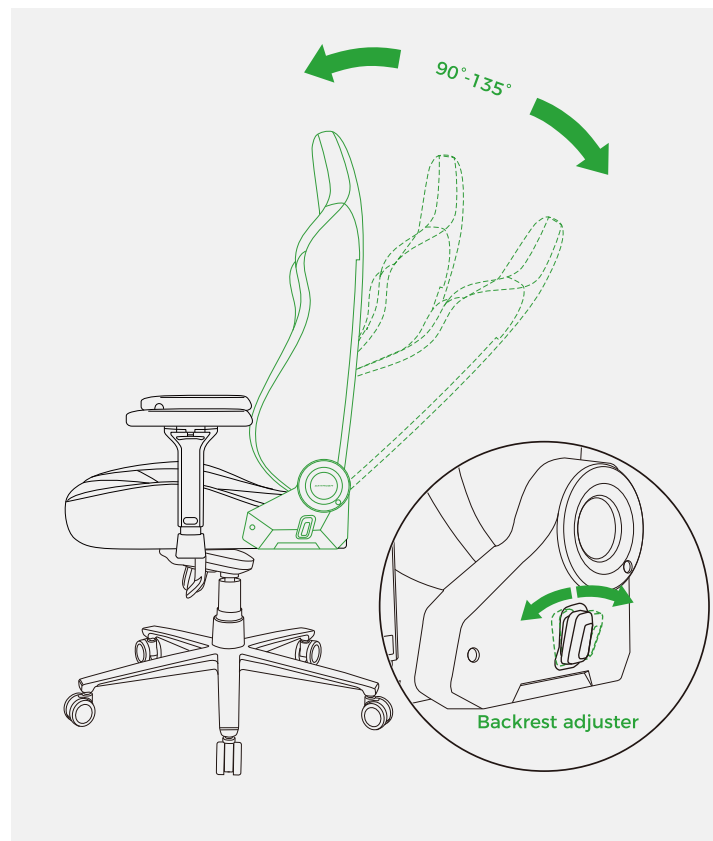
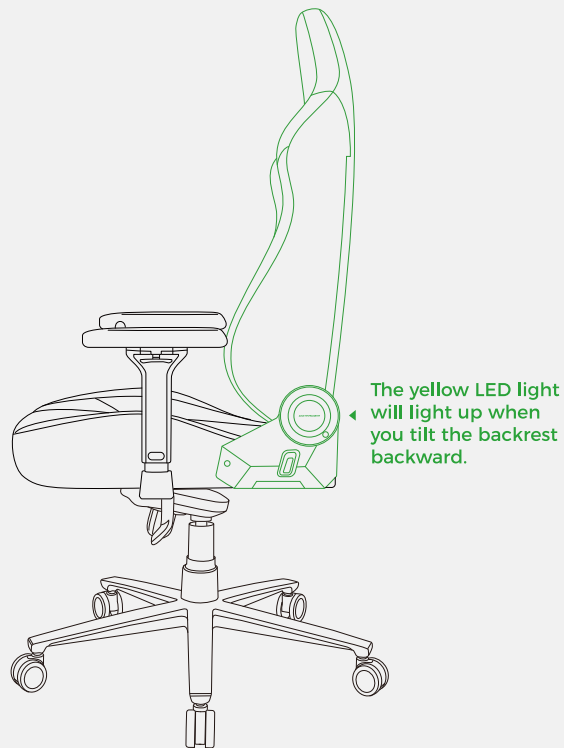
Seat Functions - Lumbar support adjustment



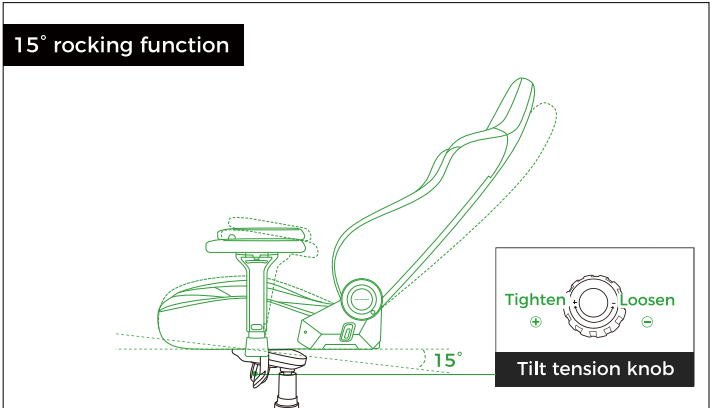
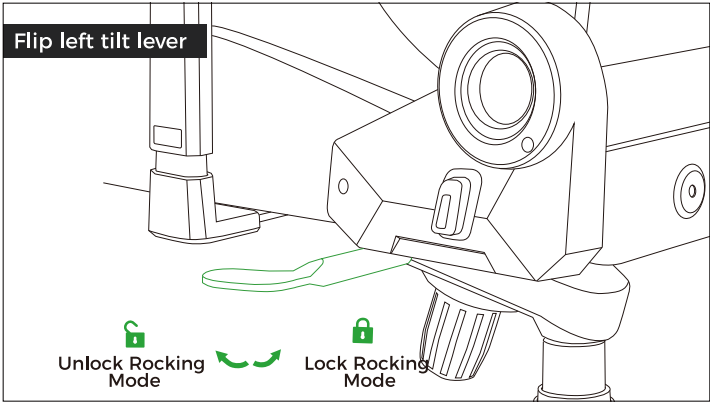
Seat Functions - **Seat height adjustment**



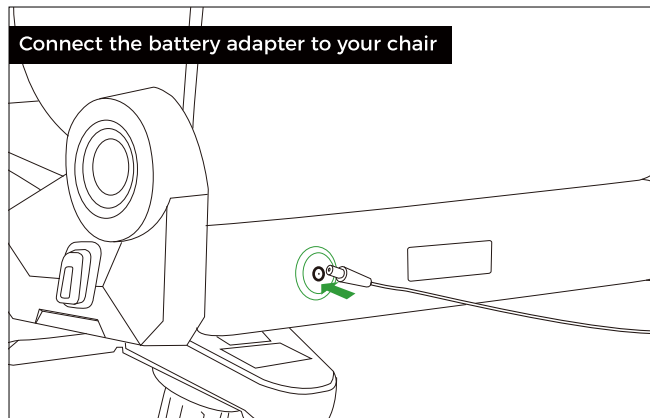
Seat Functions - **Backrest adjustment**



Seat Functions - Rocking function adjustment

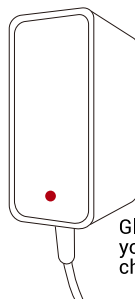


Seat Functions - **Battery charging instructions**

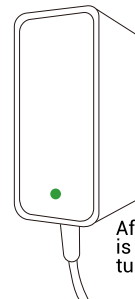


Connect the battery adapter to your chair

It takes about 3.5 hours maximum to charge the battery fully

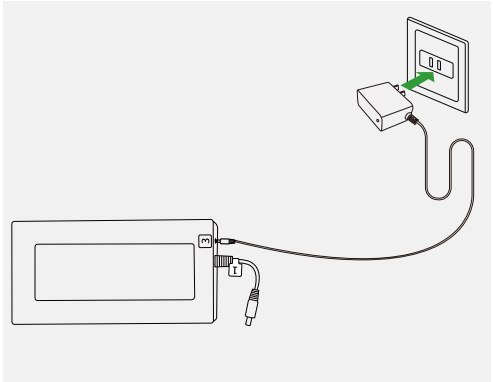
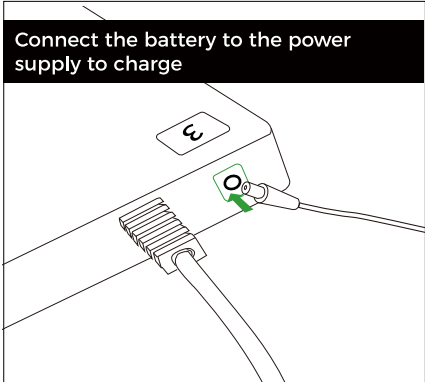
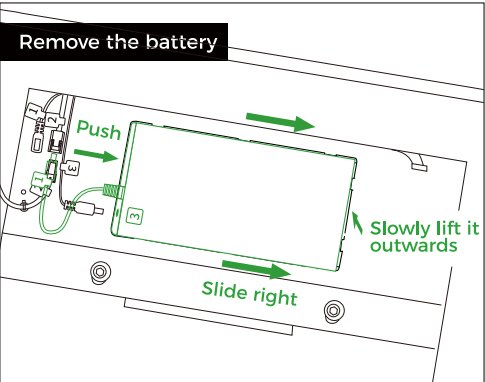
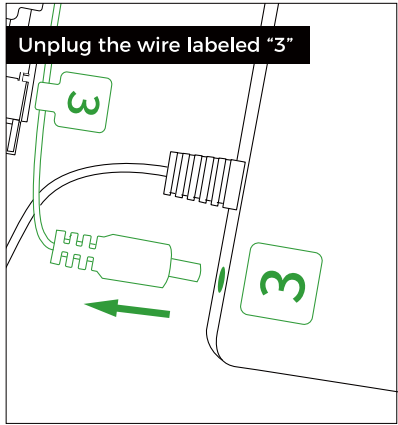
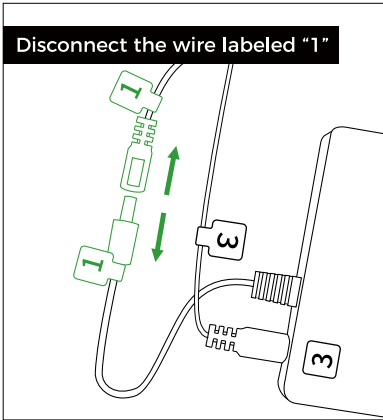
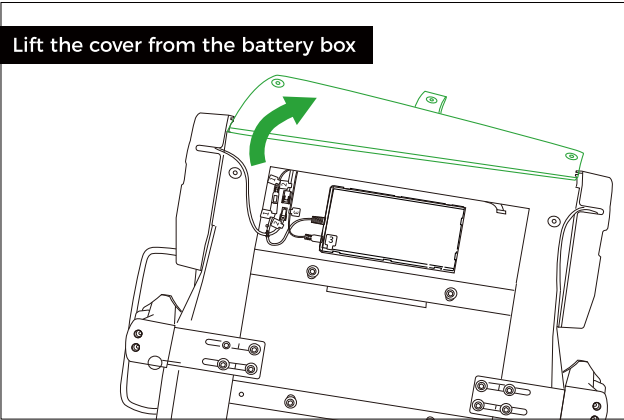


Glows red when
your chair is
charging.



After the charge
is done, the light
turns green.

Seat Functions - Battery charging instructions



Seat Functions - Safety instructions



Sit in the middle of the seat, leaning back against the backrest.



Do not sit at the chair's front edge.



Do not stand or kneel on the chair.



Do not sit with more than one person at the same time.



Do not move the chair when someone is sitting on it.



Do not push the chair down when someone is lying on it.



Do not put your whole weight on the backrest.

MARTIAN

02 / Battery Specifications

Battery Specifications -**Technical specifications**

Electrical & physical specifications	Item		Description		
	Model		HD1205C-SN210A		
	Type		Lithium-ion rechargeable batteries		
	Item		Min.	Typical	Max.
	Capacity		4600mAh	5000mAh	—
	Charge voltage		—	12.6V	—
	Max. charge current		—	1A	—
	Operating temperature	Charge	—	0 ~ +70℃	—
		Discharge	—	-10 ~ +70℃	—
	Unit weight		—	300g	—

Battery Specifications - **Safety instructions**



Don't use any chargers other than those recommended.



Don't immerse the battery in water or allow it to get wet.



Don't use or store the battery near sources of heat such as a fire or heater.



Don't reverse the positive (+) and negative (-) terminals.



Do not connect the battery directly to wall outlets or car cigarette - lighter sockets.



Don't put the battery into a fire or apply direct heat to it.



Don't short - circuit the battery by connecting wires or other metal objects.



Don't pierce the battery casing with a nail or other sharp object.



Don't break it open with a hammer or step on it.



Don't directly solder the battery terminals.



Don't attempt to disassemble or modify the battery in any way.



Do not place the battery in microwave oven or pressurized container.



Don't use the battery in combination with primary batteries or batteries of different capacities, types or brands.



Don't strike, throw or subject the battery to severe physical shock.



Don't use the battery if it gives off an odor, generates heat, becomes discolored or deformed, or appears abnormal.

Caution !

- Do not use or store the battery where is exposed to extremely hot, such as under window of a car in direct sunlight in a hot day. Otherwise, the battery may be overheated. This can also reduce battery performance and/or shorten service life.
- If the battery leaks and electrolyte gets in your eyes, do not rub them. Instead, rinse them with clean running water and immediately seek medical attention. If left as is, electrolyte can cause eye injury.
- Use the battery only under the following environmental conditions. Failure to do so can result in reduced performance or a shorten service life. Recharging the battery outside of these temperatures can cause the battery to overheat, explode or catch fire.

MARTIAN

03 / Warranty Policy

Warranty Policy

What our warranty covers?

The Martian series gaming chair is covered by a three-year warranty starting from the date your original order was shipped. If you complete our free extended warranty application within two months from the date your original order was shipped, your seat will be covered by a warranty that can last for five years. Unlike the seat, the battery of the Martian Series comes with a one-year warranty and is not eligible for an extended warranty. If you encounter any non-human damage to your seat or battery within this period, you can contact DXRacer at any time for excellent after-sales service. DXRacer is happy to assist you.

What our warranty does not cover?

- Wear and tear, which is to be expected over the course of ownership.
- Modifications or attachments to the product that are not approved by DXRacer.
- Products that were not installed, used, or maintained in accordance with product instructions and warnings.
- Misuse, abuse, and intentional damage to the product by humans.
- The material or upholstery fades, peels, loses its texture, etc. after a period of use.
- Human misuse or abuse causes injury, bodily harm, or accident.

Warranty Policy

How to get our warranty service?

1) Out Of Warranty

You can purchase your replacement parts quickly and easily in two ways:

(a).Log in to your account and go to find Parts Page. Then enter the series or model or upload a full front view photo of your chair.We'll help you find its SKU and corresponding parts. You can easily make a purchase by clicking on our link through our system's search results.

(b).If you are a big fan of DXRacer and familiar with which series your chair belongs to and its corresponding parts, then you can make a quick purchase through the product links.

2) In Warranty

If you need warranty service, you can log in to your account and click the button "After-Sales" on the lower right side of your order. Then fill out the form to tell us the details and wait. You will receive an email notification after approval.

3) Others

(a). If you encounter any difficulties with the method mentioned above, you can visit the Contact DXRacer page and fill out the form to let us know about the issue you are facing. We'll get in touch with you as soon as we can.

(b). Please have your detailed order information ready for the Warranty Department to begin your claim. You will be required to send photos or videos of the complication you are experiencing to allow our Warranty Department to further assist you.

Warranty Policy

(c). If you purchased your chair through a licensed 3rd party vendor, you will need to supply a copy of your receipt. Licensed 3rd party vendors can carry their own policies which can alter the length of the warranty for the chair purchased will extend to. DXRacer cannot extend or alter the warranty that would come with your purchase through a Licensed 3rd party vendor. Please allow 2~4 weeks for your warranty claim to be processed, approved, and shipped.

(d). If inventory for the needed part is unavailable, your replacement will ship once the inventory is replenished.

(e). Warranty hours of operation are Monday-Friday 8:30 am to 5:00 pm EST, and closed on Saturday, Sunday, and legal.

How to extend our warranty to up to 5 years for free?

- Share and post the content about DXRacer products on your social media or stream such as Facebook, YouTube, TikTok, Instagram, Twitter, Reddit, etc, with #DXRacer. Make sure your status update is visible to the public.
 - Then, log in to your personal center Account, and click the button “Extended Warranty” under your order. Fill in your order information and the post URL in 1).
 - You will receive an email after approval.
- * The Extended Warranty Policy is currently only available for Martian and Craft Series gaming chairs(excluding Martian Series batteries).
- * You must apply for an extended warranty for free within two months (from the date your original order was shipped) .
- * The battery of the Martian Series comes with a one-year warranty and is not eligible for an extended warranty.

Warranty Policy

Notice

- DXRacer does not offer exchanges for our products. You can simply return your chair and repurchase it. If your chair is out of warranty and its parts are damaged, you need to purchase new ones.
- To the extent allowed by law, DXRacer makes no other warranty, either express or implied, including any warranty of merchantability or fitness for a particular purpose. dxracer will not be liable for any consequential or incidental damages. Federal law does not permit the exclusion of certain implied warranties for consumer products. Therefore, if you are
- purchasing this product for home or personal use, the exclusion of implied warranties noted in the above paragraph does not apply to you.
- Some states do not allow the exclusion or limitation of incidental or consequential damages, so the above limitation or exclusion may not apply to you. This warranty gives you specific legal rights, and you may also have other rights which vary from state to state.
- This warranty applies only to products sold within the United States of America.

Hazardous Materials Table

Parts	Hazardous Materials					
	Lead (Pb)	Mercury (Hg)	Cadmium (Cd)	Polybrominated biphenyls (PBB)	Hexavalent Chromium (Cr(VI))	Polybrominated diphenyl ethers (PBDE)
Metal parts	<input type="radio"/>	<input type="radio"/>	<input type="radio"/>	<input type="radio"/>	<input type="radio"/>	<input type="radio"/>
Bolts, screws and other fasteners	<input type="radio"/>	<input type="radio"/>	<input type="radio"/>	<input type="radio"/>	<input type="radio"/>	<input type="radio"/>
Plastic parts	<input type="radio"/>	<input type="radio"/>	<input type="radio"/>	<input type="radio"/>	<input type="radio"/>	<input type="radio"/>
Electronic parts	<input type="radio"/>	<input type="radio"/>	<input type="radio"/>	<input type="radio"/>	<input type="radio"/>	<input type="radio"/>
Label materials	<input type="radio"/>	<input type="radio"/>	<input type="radio"/>	<input type="radio"/>	<input type="radio"/>	<input type="radio"/>
<input type="radio"/> : Indicates that the content of the hazardous substance in all the materials for the parts is below the limit requirement RoHS and REACH. Note: The testing standard for electronic parts is RoHS, whereas for other products it is REACH.						

Recycling Tips:
 As per state legislation, when you intend to get rid of these products, please deliver them to a disposal company that is qualified to handle the disposal of waste electrical and electronic products.

DXRACER

⌘ www.dxracer.com

☎ 810-626-7061
+1 (855) 627-5724

📍 9177 E. Michigan 36 Whitmore Lake,
MI 48189