

The DXRACER logo is rendered in a bold, italicized, sans-serif typeface. It is positioned centrally at the top of the page, above the main title. The entire background of the page is a dark charcoal grey, populated with white line-art illustrations of various computer peripherals, including keyboards, mice, and cables, scattered around the central text.

DXRACER

Product Usage Guide

TRITON SERIES

Important Safety Information

This product is to be assembled by at least two people. Please check the product list and make sure you are not missing any parts before assembly. If any parts are missing or broken, please contact us for replacement.

This document contains important safety regulations. Please read this user manual carefully before use as it provides key information about safety, use, assembly and maintenance of the desk.

- This product is designed for indoor use only, in dry, ventilated rooms. Do not operate outdoors or in high temperatures, high humidity, and high salinity environments. Place the product away from corrosive gases, polluted gases, and dusty surroundings.
- Keep small items of this product out of the reach of children and pets to prevent choking hazards if swallowed.
- Children, the elderly, and people with disabilities should always be supervised by adults when using the desk to ensure their safety and prevent any accidents.
- Please ensure there are no obstacles in the surroundings before using the desk. Please maintain a safe distance while the desk is raised or lowered. Organize all cords to prevent them from being tugged by the desk's movement.
- Please connect the power supply according to the product's specific requirements. If you find the cable or plug is damaged, stop using the desk immediately. Disconnect the power and cords before moving the desk or adding or removing the parts. Ensure to turn off any external devices including peripherals like keyboards, mice, and so on.
- If any liquid is spilled on your desk, the first and most crucial step is to disconnect the power immediately. Then clean with a dry towel and wait for air drying before using again.
- Any unauthorized modifications to the product is strictly forbidden. Any non-conforming installation and use may result in product damage or even personal injury.



Do not exceed the desk top and magnetic rear cover maximum load capacity.



Do not stand on the desk.



Do not sit on the desk.



Do not drag or shake the desk.



Do not use the desk for climbing.



Do not crawl or lie under the desk.

Catalogue

01 / Control Panel Operating Instructions

Control Panel Buttons	04
Lock and Unlock	05
Height Memory Function (M1)	06
Height Memory Function (M2)	07
Minimum Height Limit	08
Maximum Height Limit	09
Clearing Maximum (Minimum) Height Limit Data	10
Measurement Units	11
Auto Reverse Sensitivity	12
Pickup Sensitivity	13
Light Control	14
Light Mode and Error Code	15
Reset Function	16
Control Panel Error Code and Solutions	17

02 / Wireless Control Knob Operating Instructions

Battery Installation and Network Connection	19
Control Functions	21
Optional Computer Case Holder Under Desk	22

03 / AI Voice Assistant Operating Instructions

Offline Voice Recognition	24
Wake Word	25

04 / Mobile App Control Operating Instructions

Software Download	28
Control Interface	29

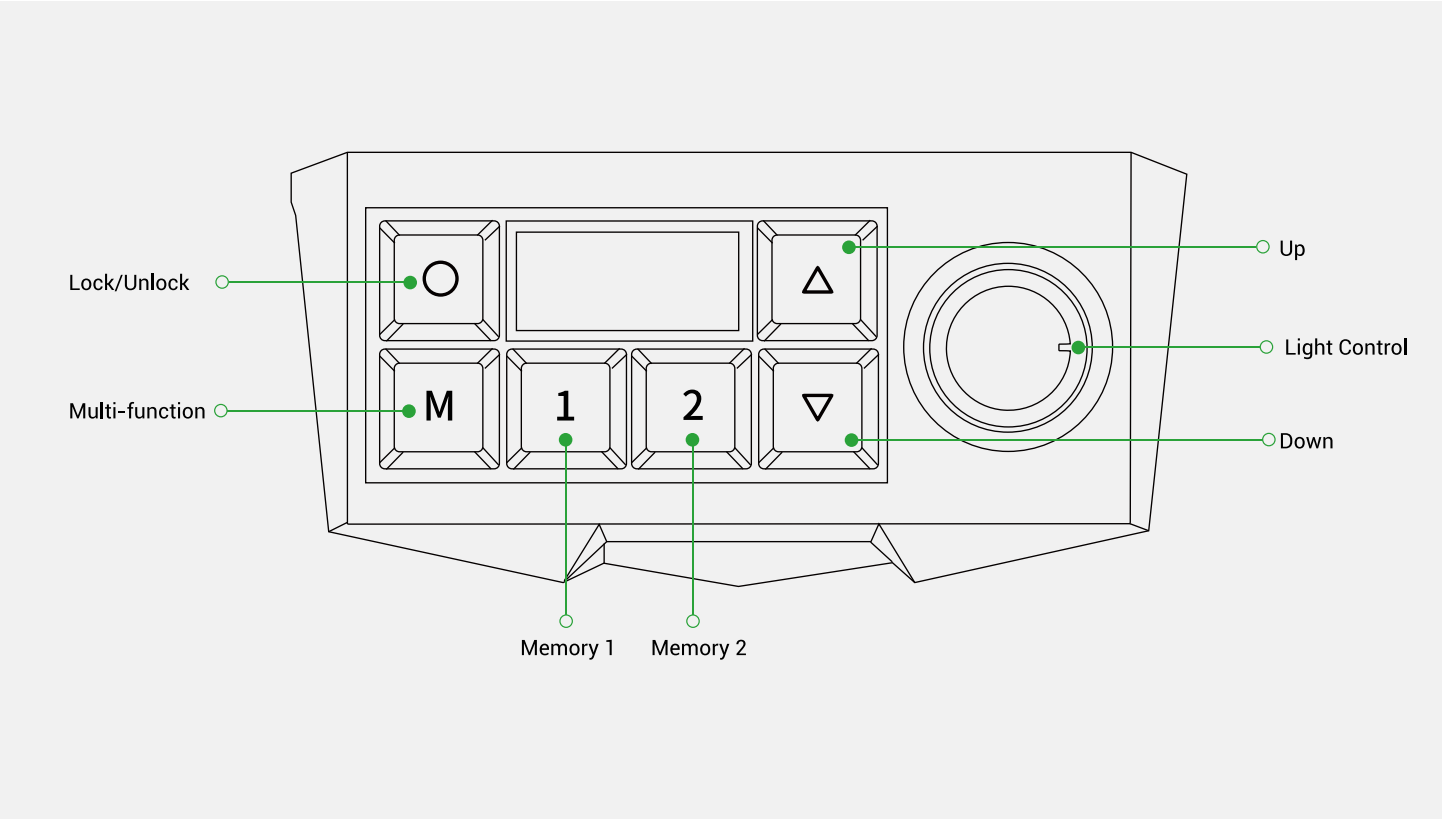
05 / Warranty Policy

What Our Warranty Covers	31
What Our Warranty Does Not Cover	31
How to Get Our Warranty Service	32
Product Technical Parameters	33

TRITON

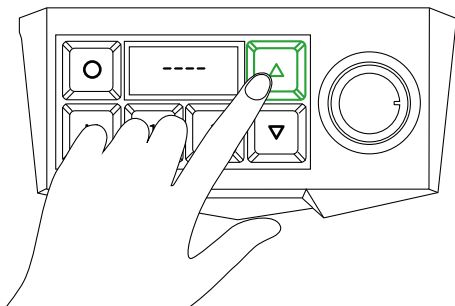
01 / Control Panel Operating Instructions

Control Panel Buttons

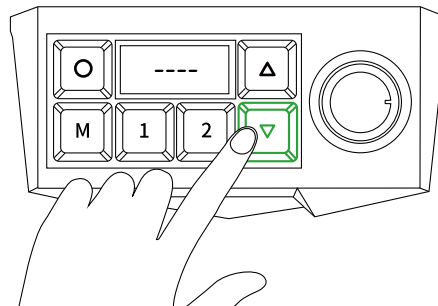


Lock and Unlock

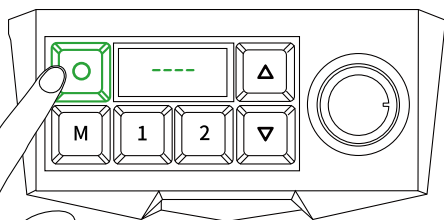
Press and hold the "Δ" button to lift up your desk



Press and hold the "▽" button to drop down your desk

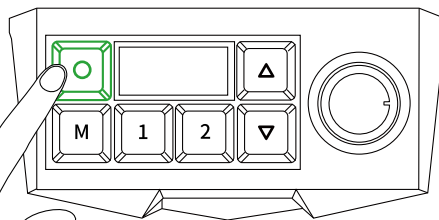


Press the "O" button to lock the control panel



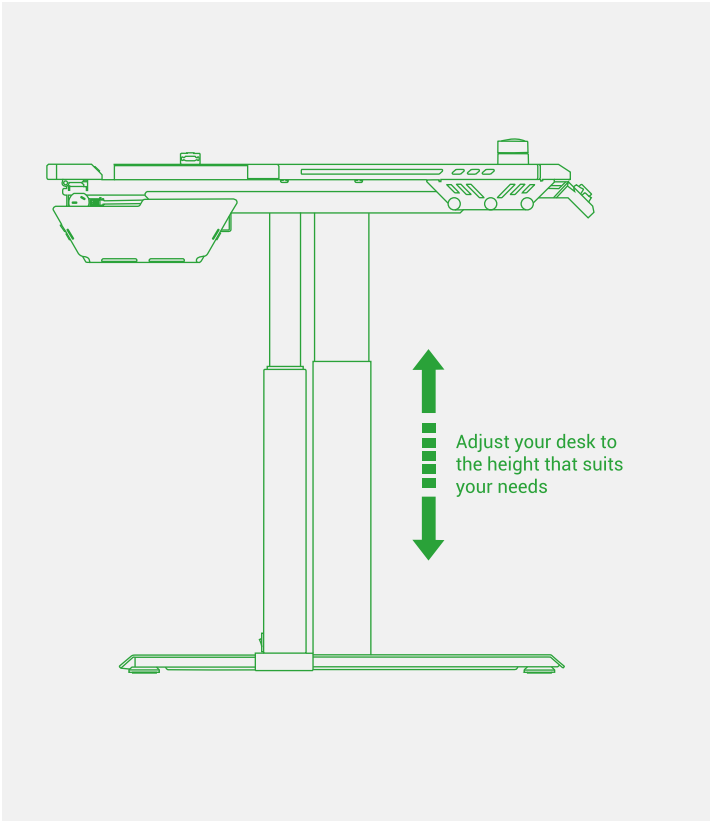
The red backlight is always on, and the display shows "----".

Press and hold the "O" button to unlock the control panel

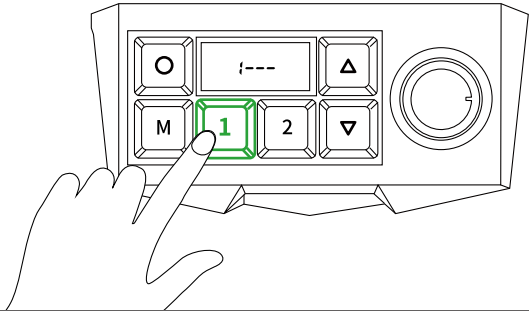


The light of the backlit control panel changes to the same mode as the light strip, and the screen displays the current height of your desk.

Height Memory Function(M1)

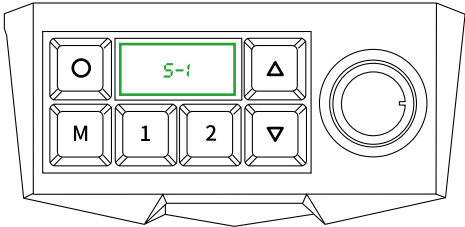


Press and hold the "1" button for about 5 seconds



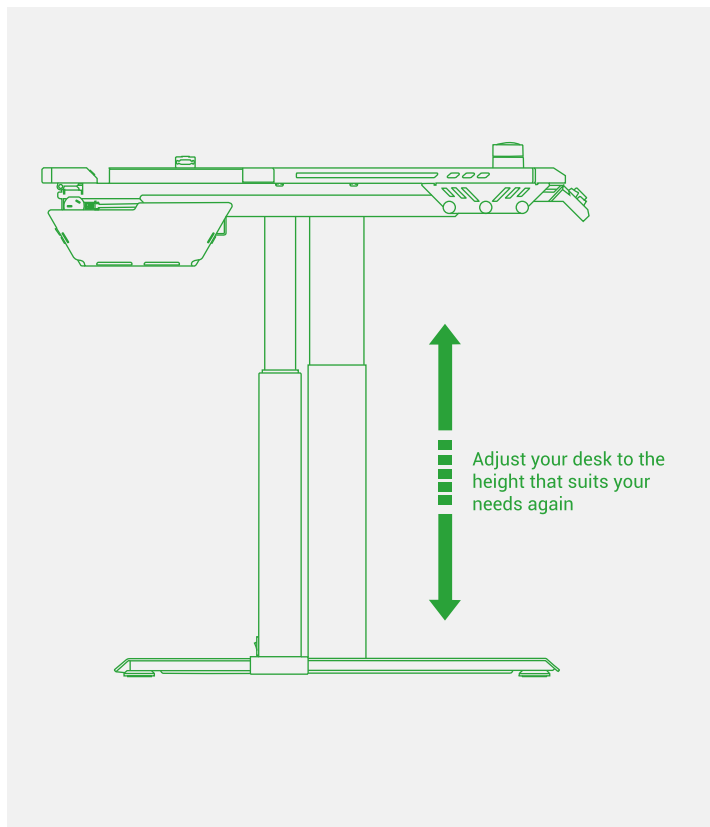
The display shows "S-1"

Note: The deviation or error in memory height adjustment is below 2 millimeters

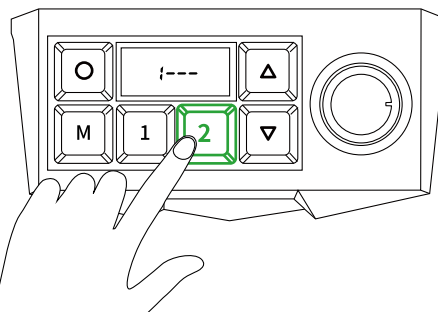


After a successful operation, the display will show the modified height after 5 seconds
To switch to memory height 1 quickly, only press the "1" button

Height Memory Function(M2)

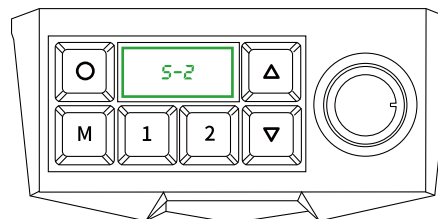


Press and hold the "2" button for about 5 seconds



The display shows "S-2"

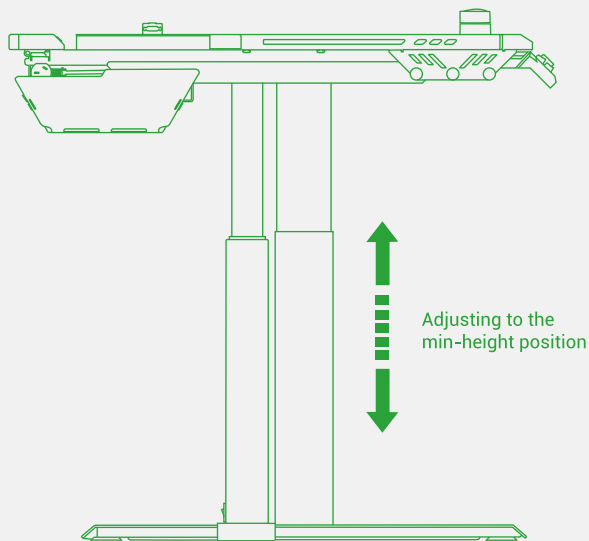
Note: The deviation or error in memory height adjustment is below 2 millimeters



After a successful operation, the display will show the modified height after 5 seconds
To switch to memory height 1 quickly, only press the "1" button

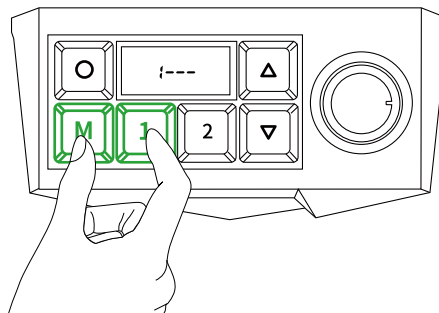
Minimum Height Limit

The default minimum height value for the Triton desk is 25.4"/64.5 cm, and the maximum height value is 51"/129.5 cm

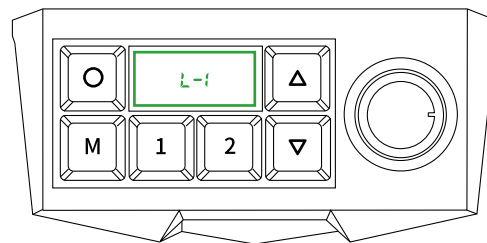


▲ If your memory height exceeds the maximum (minimum) height limits, the setting will be invalid. You must reset the memory position

Press and hold the "M" and "1" buttons for 5 seconds



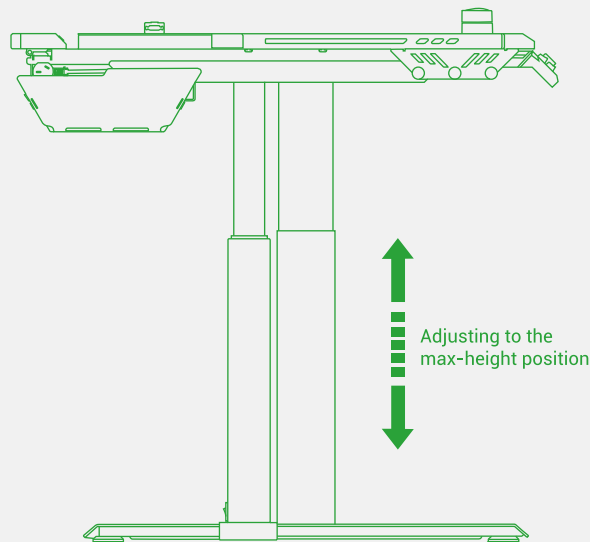
The display shows "L-1"



After a successful operation, the screen will show the adjusted height data after 5 seconds

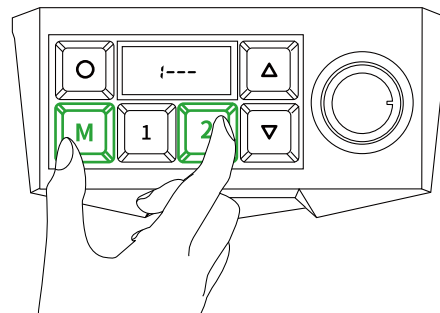
Maximum Height Limit

The default minimum height value for the Triton desk is 25.4"/64.5 cm, and the maximum height value is 51"/129.5 cm

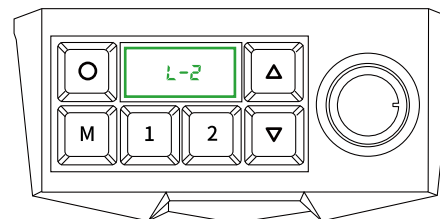


If your memory height exceeds the maximum (minimum) height limits, the setting will be invalid. You must reset the memory position

Press and hold the "M" and "2" buttons for 5 seconds



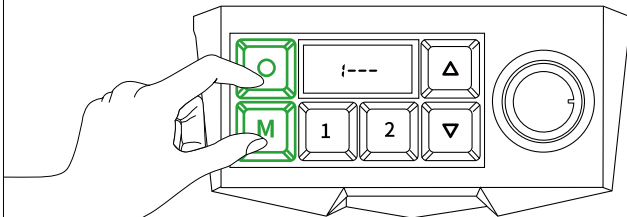
The display shows "L-2"



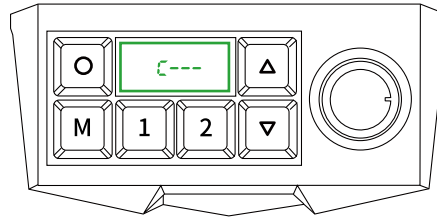
After a successful operation, the screen will show the adjusted height data after 5 seconds

Clearing Maximum (Minimum) Height Limit Data

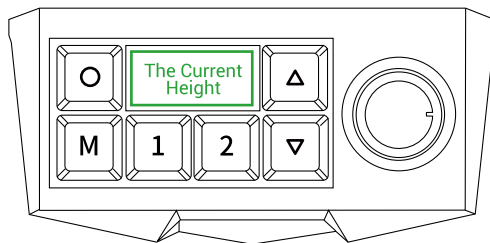
Press and hold the "M" and "O" buttons for 5 seconds



The display shows "C---" for 5 seconds without any operations

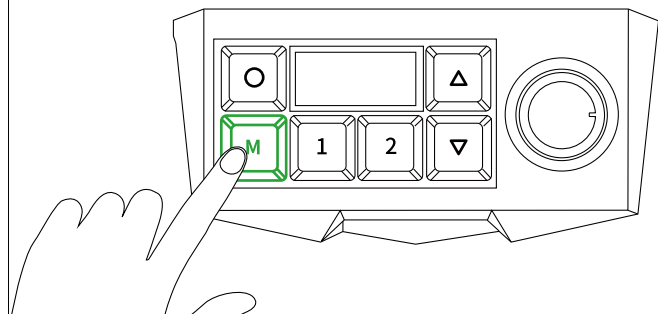


The screen will display the current height of your desk. The data has been reverted to its default value
The height limitations are set at a maximum of 51"(129.5 cm) and a minimum of 25.4"(64.5 cm)

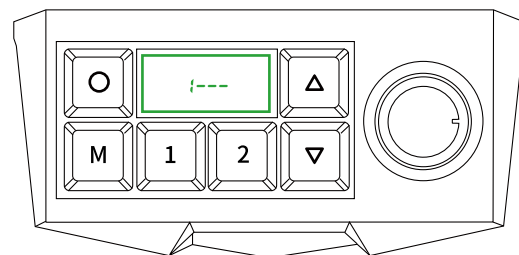


Measurement Units

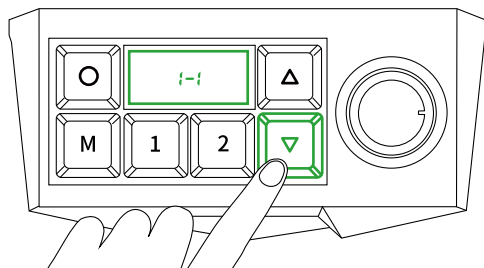
Press and hold the "M" button for about 5 seconds



The display shows "1---" and flashes

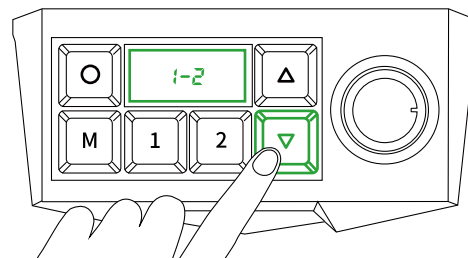


Switch to unit 'centimeter': Press the "▽" button, and the display shows "1-1"



After a successful operation, the display will show the modified unit after 5 seconds

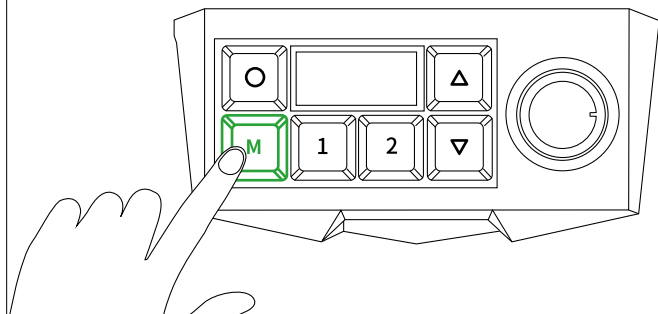
Switch to unit 'inch': Press the "▽" button, and the display shows "1-2"



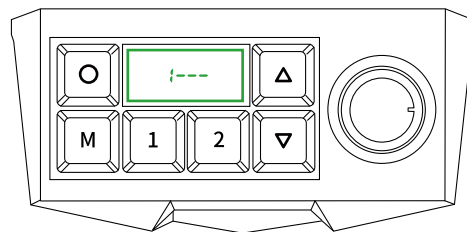
After a successful operation, the display will show the modified unit after 5 seconds

Auto Reverse Sensitivity

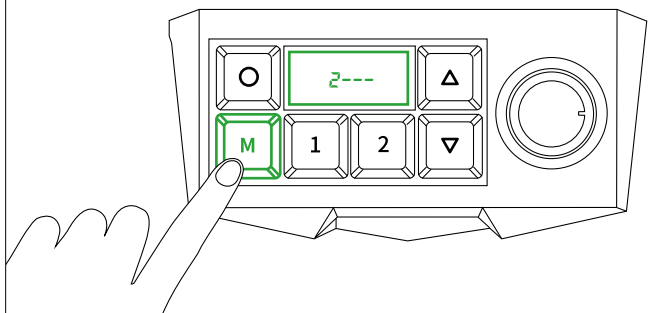
Press and hold the "M" button for about 5 seconds



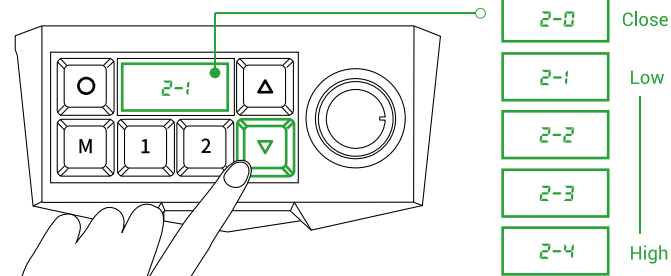
The display shows "1---" and flashes



Press the "M" button again. Then the display shows "2---" and flashes

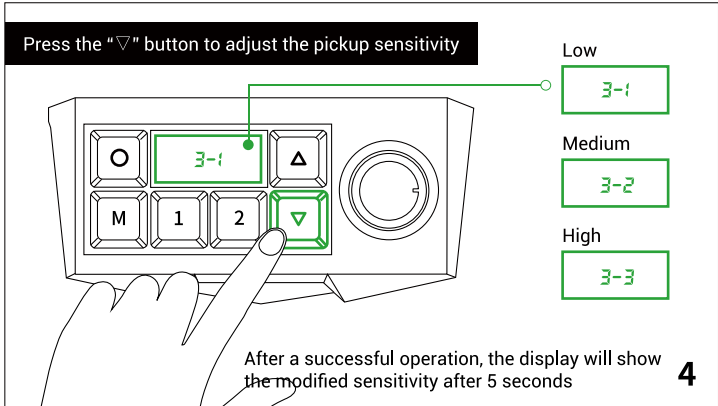
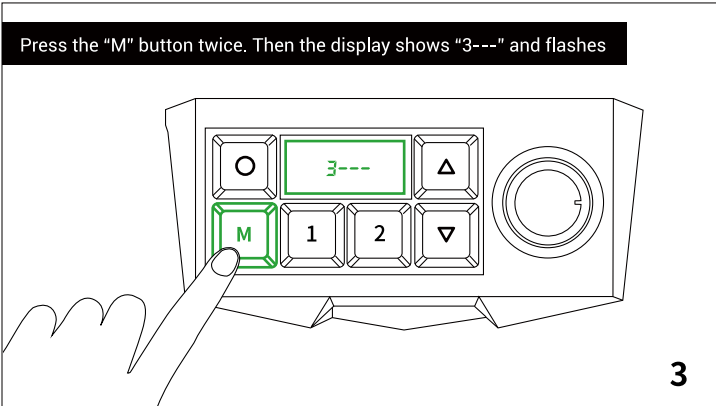
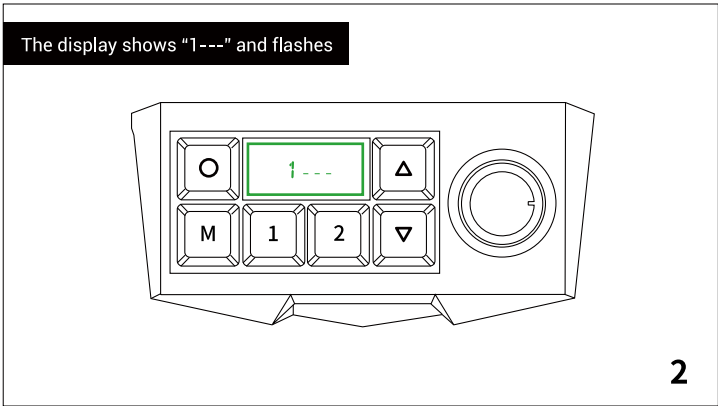
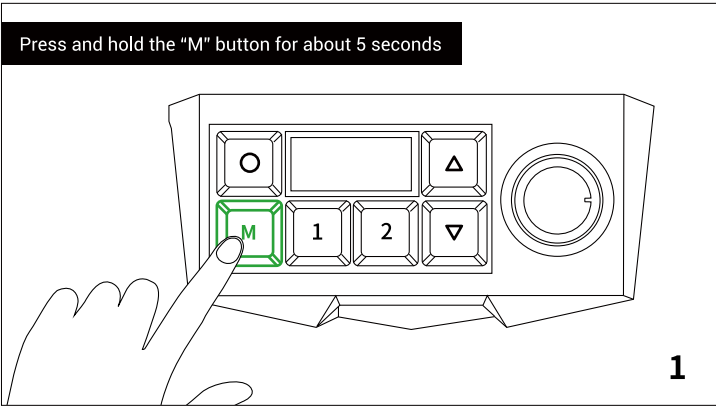


Press the "∇" button to adjust the auto reverse sensitivity



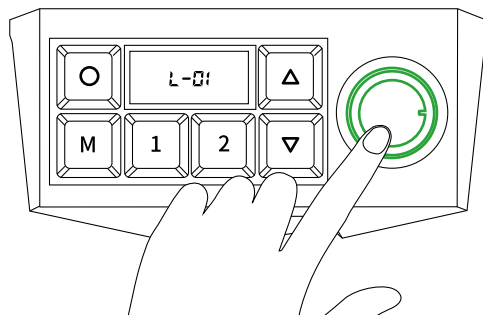
After a successful operation, the display will show the modified sensitivity after 5 seconds

Pickup Sensitivity

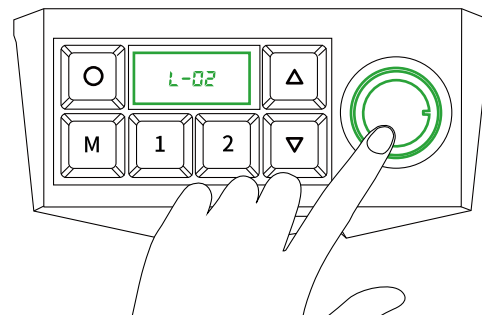


Light Control

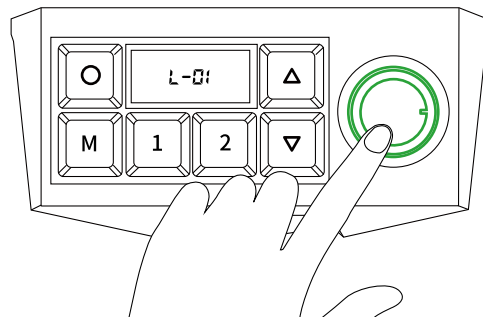
Press the knob to turn on the light



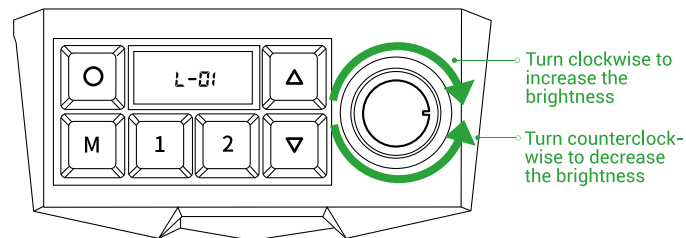
Press the knob again to change the light mode



Press and hold the knob to turn off the light



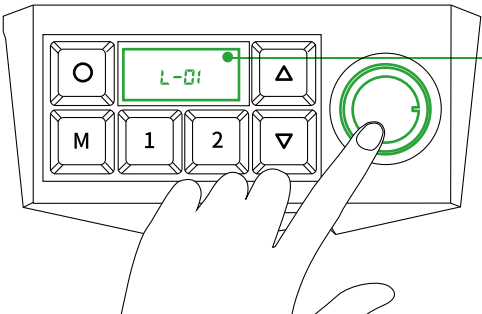
Rotate the knob to adjust the brightness of the LED strip and keyboard



Except in lock mode, the backlit control panel is synchronized with the light strip mode.

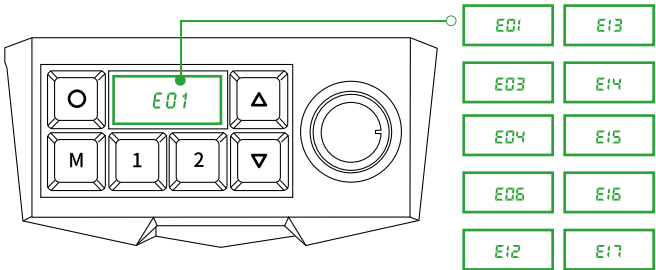
Light Mode and Error Code

Press the knob to change the light mode

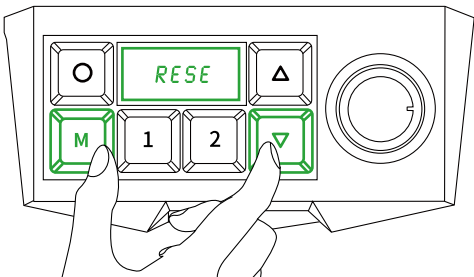


Breathing L-01	Rainbow L-02	Pickup 1 L-03	Pickup 2 L-04
Daylight L-05	Rouge L-06	Starry Sky L-07	Firefly L-08

When the desktop is overloaded or the control panel is unresponsive, the display will show "ERRO"



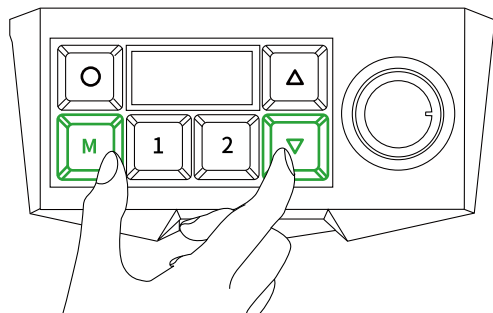
Reset: Press and hold the "M" and "▽" buttons for about 5 seconds until the desk reaches its lowest height



Reset Function

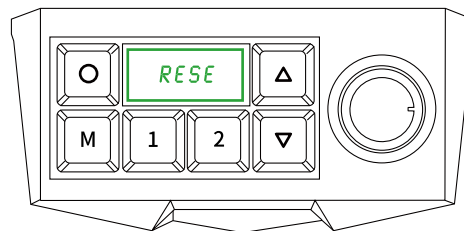
Press and hold the "M" and "▽" buttons for about 5 seconds

长按



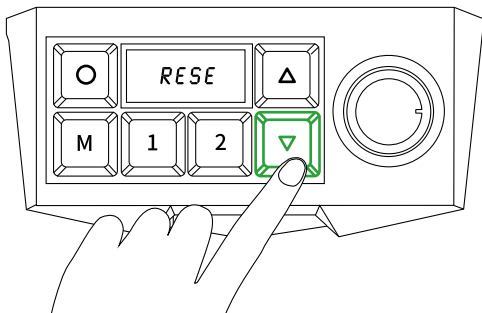
1

Until the display shows "RESE"



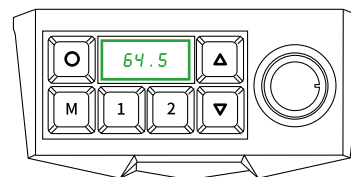
2

Press and hold the "▽" button to lower your desk to the lowest position



3

The display shows 64.5 cm (25.4"), which means the reset has been finished
The red and blue lights alternately flash 3 times



Unit: Centimeter

Unit: Inch

64.5

25.4

The value shown above indicates that the reset has been successfully completed

- Do not disconnect the power during the reset process. The reset procedure can be stopped for safety at any time
- All memory position data will be cleared in the reset mode. Please reset once again after the reset mode has been completed

4

Control Panel Error Code and Solutions

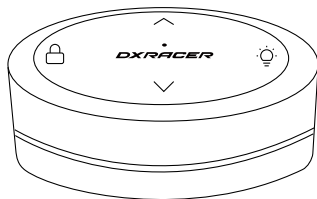
Error Code	Error Cause	Criteria for Judgment	Troubleshooting and Solutions
E01	Fault	Connection between the desk leg and control box is disconnected	1. Check if the connection between the desk leg and control box is loose; ensure it is properly connected 2. Replace the desk leg if any damage has occurred to its interior components
E03	Overload	Desktop load exceeds the rated load of the control box	Reduce the weight of items on the desktop
E04	Initialization error	Initialization interrupted	Reinitialize the system
E06	Communication interruption	Control panel fails to receive the data from the control box for 5 seconds	1. Check if the connection between the control panel and the control box is correct 2. Check if the control box is functioning normally
E12	Gyroscope error	1. Gyroscope malfunction 2. Desktop is tilted	1. If the gyroscope is unresponsive or not sensitive, restart the power 2. Ensure the desktop remains level or adjust the control box to a level position
E13	Input voltage exceeds 45v or below 20v	/	1. Check if the power supply is connected correctly 2. Try to reset your desk 3. If the first two steps do not resolve the issue, contact our customer support team for after-sales services
E14	Height difference of screws exceeds 10mm	/	Try to reset your desk
E15	Control box overheating	/	Allow the light strip, control box or your desk to cool for 18 minutes
E16	Left desk leg error	/	1. Check the correct connection of the cable to the left leg of the desk 2. Contact our customer support team for after-sales services
E17	Right desk leg error	/	1. Check the correct connection of the cable to the right leg of the desk 2. Contact our customer support team for after-sales services

TRITON

02 / Wireless Control Knob Operating Instructions

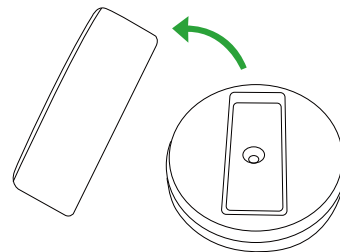
Battery Installation and Network Connection

Wireless Control Knob



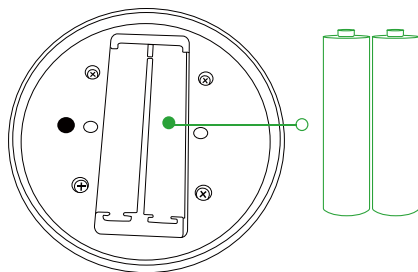
1

Remove the battery compartment cover



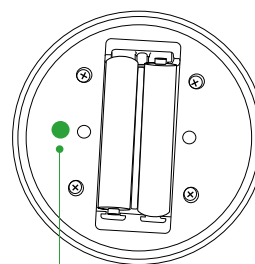
2

Match the positive and negative markings and insert a pair of AAA 1.5V batteries correctly

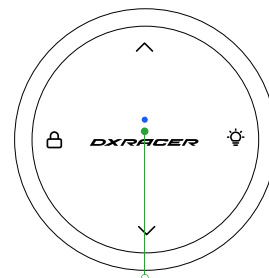


3

Make sure your desk is powered on, then press the WiFi button the blue light will flash alternately



WiFi Button

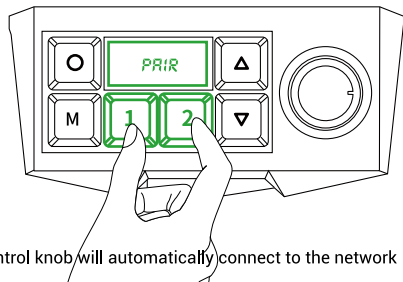


Blue light flashes alternately

4

Battery Installation and Network Connection

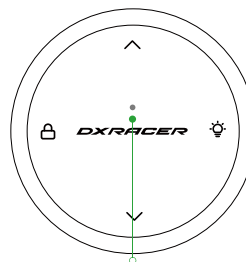
Press and hold the "1" and "2" keys, the display shows "PAIR" and flashes



The wireless control knob will automatically connect to the network

5

The network indicator light (blue light) will turn off after successful connection

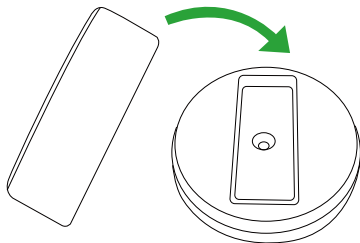


Note: The connection time is around 30 seconds. If the connection is unsuccessful, you can repeat the steps above

Network indicator light (blue light) turns off

6

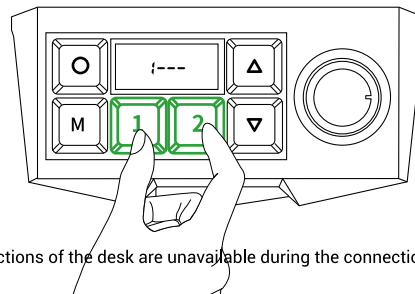
After powering on the wireless control knob, press the bottom cover back into place for normal use



Note: This product contains magnets; do not place magnetic items such as bank cards or passbooks near this product

7

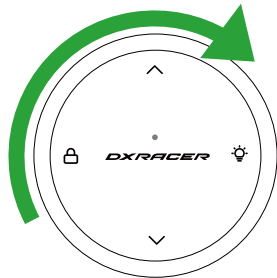
To exit the network connection mode during the process, simply press and hold the "1" and "2" keys again



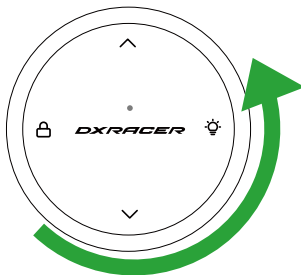
Note: All functions of the desk are unavailable during the connection process

Control Functions

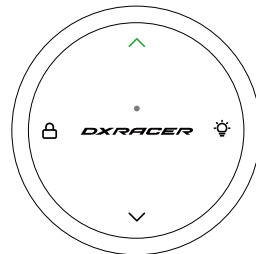
Rotate the knob clockwise to increase the brightness of the light strip



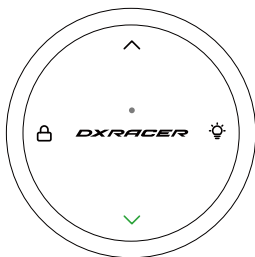
Rotate the knob counterclockwise to decrease the brightness of the light strip



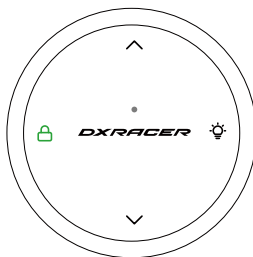
Press the " ^ " button to raise your desk and release it to stop



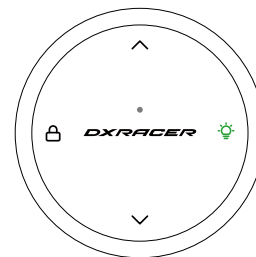
Press the " v " button to lower your desk and release it to stop



Press the "🔒" button to lock your desk; Press and hold the "🔒" button to unlock your desk

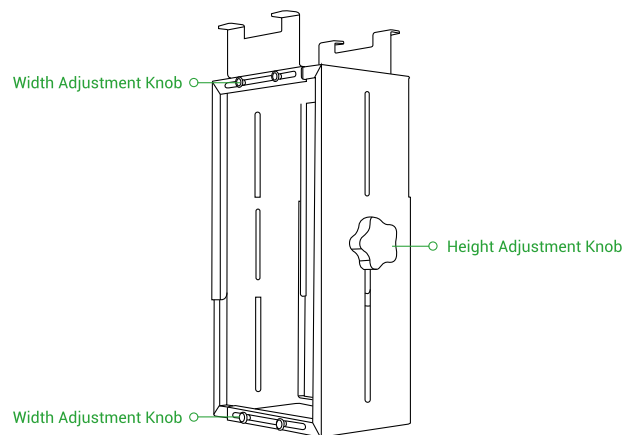


Press the "💡" button to turn on or switch the lighting mode
Press and hold the "💡" button to turn off the light



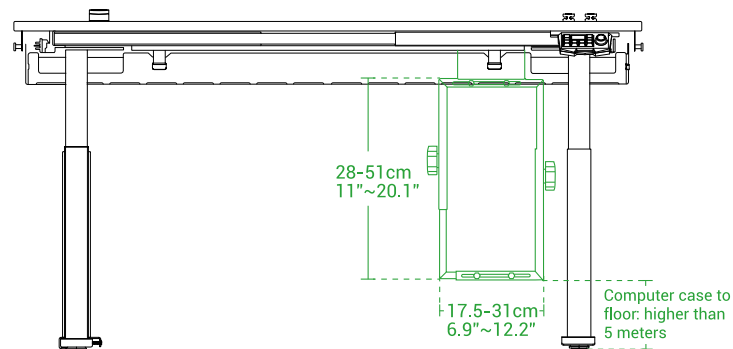
Optional Computer Case Holder Under Desk

Computer Case Holder



A separate purchase is required for the computer case holder.

The computer case holder is compatible with cases that have a height of 28-51cm and a width of 17.5-31 cm



Note:

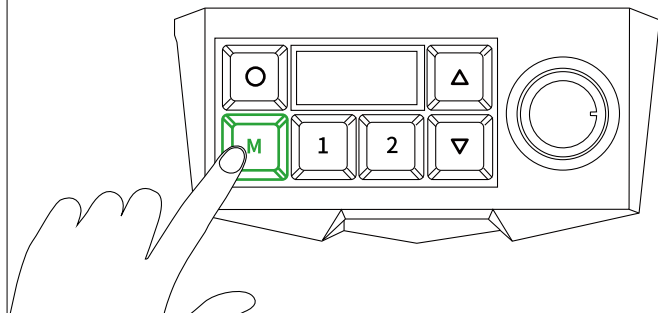
1. For optimal use, it is recommended to set the minimum height limit of your desk by pressing the "M" and "I" keys together when the computer case holder is 5 cm above the ground.
2. To make sure the reset mode goes smoothly, either lower the computer case so it's lower than 50 cm from the ground or take it apart and decrease its height to the minimum before you use it.

TRITON

03 / AI Voice Assistant Operating Instructions

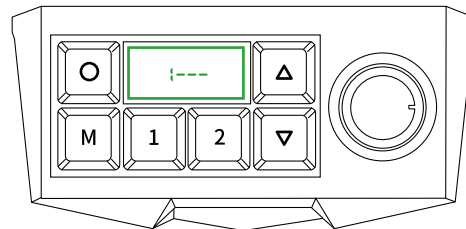
Offline Voice Recognition

Press and hold the "M" button for 5 seconds



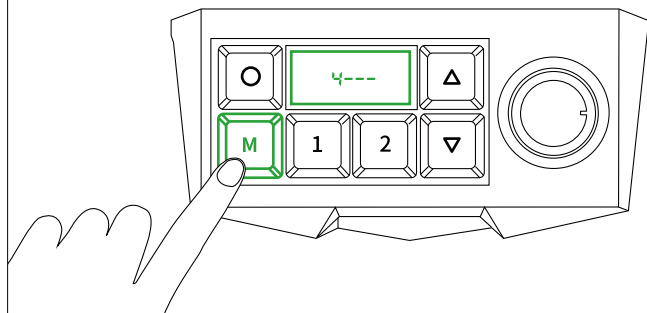
1

The display shows "1---" and flashes



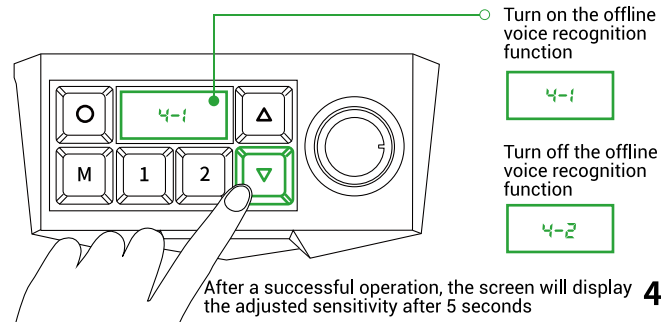
2

Press the "M" button three times, the display shows "4---" and flashes



3

Press the "▽" button to enter the offline voice recognition settings



4

Wake Word

Wake Word: Hey, Triton Default volume: 50% * Entered sleep mode after 30 seconds of no command

NO.	Command Words	Response Phrases
01	Up Raise desk Increase height Lift desk Lift up Ascend Adjust upward	Your desk is lowering
02	Down Lower desk Adjust downward Reduce height Drop down Descend Decrease level Sink desk	Your desk is lowering
03	Stop Pause Stop ascending Stop descending Stop rising Stop lowering Stop movement Pause operation	Stopped
04	Further up Increase height Lift up Ascend Ascend a bit Raise a bit Lift a bit Small lift Adjust upward slightly Raise slightly Go up a bit	Okay
05	Further down Decrease height A bit lower Lower Drop a bit Go down a bit Lower slightly Sink a bit Small drop Go down slightly Reduce height a bit	Okay
06	Set memory position 1	Memory position 1 has been saved
07	Set memory position 2	Memory position 2 has been saved
08	Return to memory position 1	Okay, please ensure there are no obstacles around your desk. Switching to memory position 1 for you
09	Return to memory position 2	Okay, please ensure there are no obstacles around your desk. Switching to memory position 2 for you

Wake Word

NO.	Command Words	Response Phrases
10	Speak louder Talk louder Increase volume Raise volume Turn up volume Volume up Louder Boost volume Enhance volume Elevate sound	Volume has been increased
11	Speak more quietly Speak more softly Decrease volume Lower volume Reduce volume Quieter Turn down volume Volume down Lower sound level Diminish sound Mute sound	Volume has been decreased
12	Switch light Next light mode Change light	Okay, the lighting mode has been switched for you
13	Increase brightness Brighter Increase brightness	Okay, the brightness of the light has been increased
14	Decrease brightness Dimmer Reduce brightness	Okay, the brightness of the light has been decreased
15	Turn off light	Okay, the light has been turned off
16	Turn on light	Okay, the light has been turned on
17	Red light	Okay, switched to red light
18	Green light	Okay, switched to green light
19	Blue light	Okay, switched to blue light
20	Daylight mode	Okay, switched to daylight mode

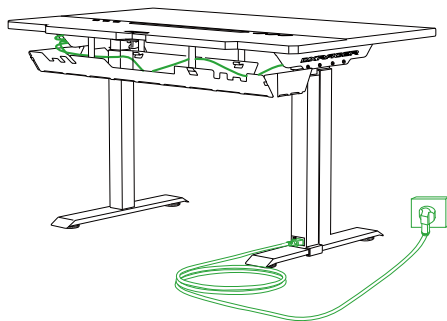
Note: The offline voice recognition function is not available in lock mode.
The offline voice recognition function is available when it is activated and in unlock mode.

TRITON

04 / Mobile App Control Operating Instructions

Software Download

Make sure the desk is powered on and all cables are securely connected



1

Scan the code on your cell phone to download the Easy Control App and turn on Bluetooth permissions



Android version



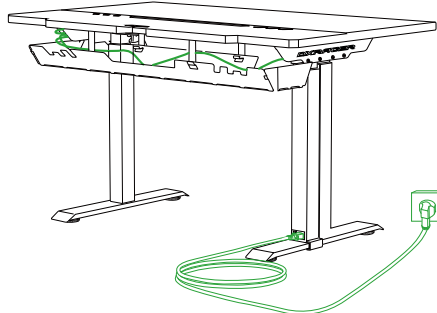
iOS version



*Easy Control App is only available for mobile devices now

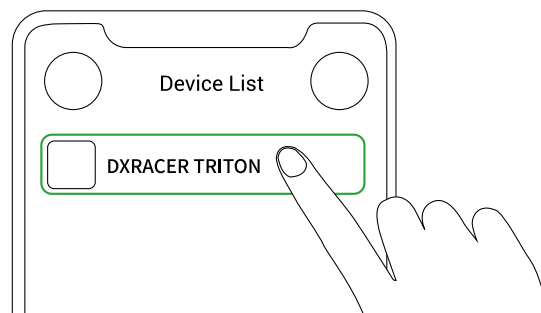
2

Make sure your mobile phone is near the desk



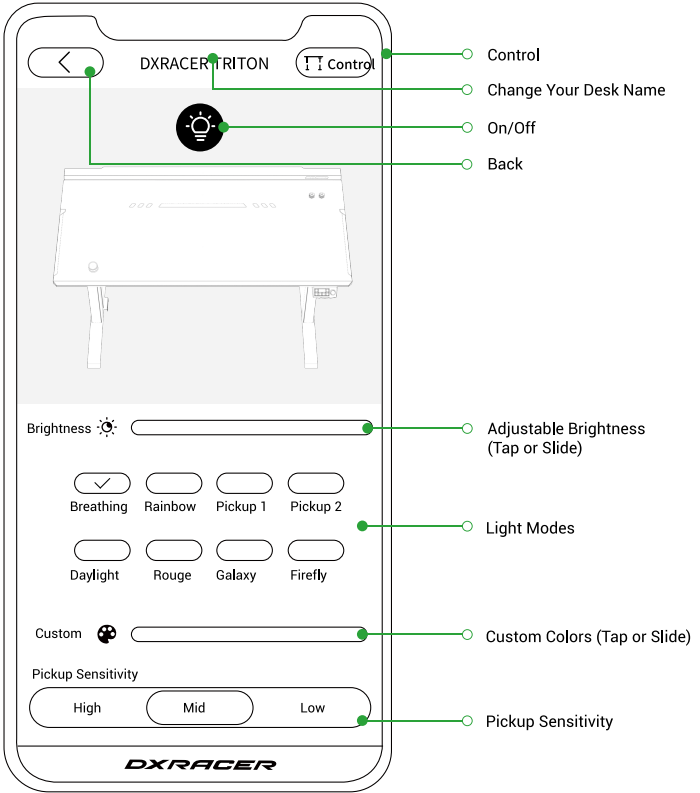
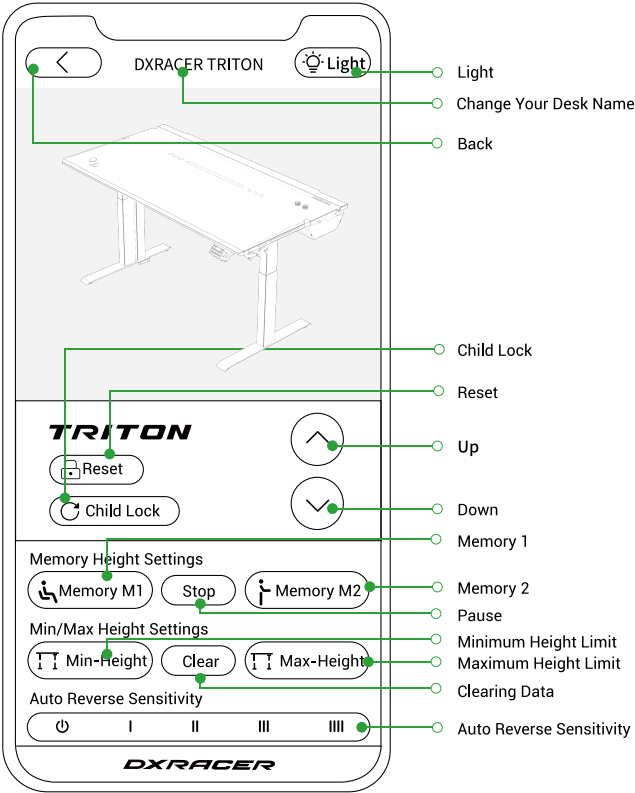
3

Click the icon to enter the App control interface



4

Control Interface



TRITON

05 / Warranty Policy

Warranty Policy

What Our Warranty Covers

DXRACER USA promises to repair or replace any DXRACER USA product or component that DXRACER USA finds to be defective in material or workmanship during the warranty period. Only Triton Series products sold on the United States Official Website are covered by this warranty policy. DXRACER will honor the warranty from the date your original order was shipped so long as you, the original purchaser, still own it.

DXRACER Triton Series products are covered by a three-year warranty from the date your original order was shipped. However, please note that the Control Panel and LED Light Strip are covered by a two-year warranty; the computer case holder is an optional part that can be purchased separately, and it comes with a three-year warranty. If you encounter any quality issues caused by non-human factors during this period, you can contact DXRACER at any time. We will provide you with high-quality after-sales service.

What Our Warranty Does Not Cover

- Wear and tear occurs during daily use, for example, the material or upholstery fades, peels, loses its texture, etc. after a period of use.
- Unauthorized Modifications to the product.
- Products that were not assembled, used, or maintained following the instructions
- Human misuse, abuse, and intentional damage to the product, even causing bodily harm, fire, or accident.
- Damage to the product due to prolonged contact with animals or exposure to high heat, high humidity, high salinity or pollutant gases.
- Natural disasters, transportation damage or other causes beyond our control.

Warranty Policy

How to Get Our Warranty Service

In Warranty

1) If you need warranty service, you can log in to your account and click the button "After-Sales" on the lower right side of your order. Then fill out the form to tell us the details and wait. You will receive an email notification after approval.

2) Out Of Warranty

You can visit our Contact DXRACER Page to fill out the form. We are here to serve you.

3) Others

- If you encounter any difficulties with the method mentioned above, you can visit the Contact DXRACER page and fill out the form to let us know about the issue you are facing. We'll get in touch with you as soon as we can.
- Please have your detailed order information ready for the Warranty Department to begin your claim. You will be required to send photos or videos of the complication you are experiencing to allow our Warranty Department to further assist you.
- If you purchased your product through a licensed 3rd party vendor, you will need to supply a copy of your receipt. Licensed 3rd party vendors have their own policies. DXRACER cannot extend or alter the warranty that would come with your purchase through a Licensed 3rd party vendor. Please allow 2-4 weeks for your warranty claim to be processed, approved, and shipped.
- If inventory for the needed part is unavailable, your replacement will ship once the inventory is replenished.
- Warranty hours of operation are Monday-Friday 8:30 am to 5:00 pm EST, and closed on Saturday, Sunday, and legal.

Product Technical Parameters

Name	DXRacer TRITON Series Desk	Input Voltage (Control Box)	100-240 V
Rated power	350W	Output Voltage (Control Box)	36 V
Size	Regular/L	Maximum Rated Current	12 A
	Plus/XL		
Full Desk Top Dimensions	L: 63" L*33.9" W*1" H / 160 cm*86 cm*2.5 cm	Number of Motors	2
	XL:70.9" L*33.9" W*1" H / 180 cm*86 cm*2.5 cm		
Adjustable Height Range	25.4"~51" / 64.5 cm ~129.5 cm	Input Voltage (DC Motor)	12 V DC
Maximum Load Capacity	120 kg / 264.6 lbs	Motor Speed (Vertical Lift)	36 mm/s
Weight	L: 156.3 lbs / 70.9 kg	Noise Level	<45 dB
	XL:165.8 lbs / 75.2 kg		
Frame Construction	Steel	Intended Use Temperature Range	-20 °C-50 °C
Desk Top Construction	High Density Fiberboard (HDF), Steel Plate Cold Commercial (SPCC), Polymethyl Methacrylate (PMMA)	Intended Use Humidity Range	RH40%-80%

DXRACER

🌐 www.dxracer.com

☎ 810-626-7061

📍 9177 E. Michigan 36 Whitmore Lake,
MI 48189