

DXRACER

DRIFTING

Drifting Series Gaming Chair Product Introduction

2025



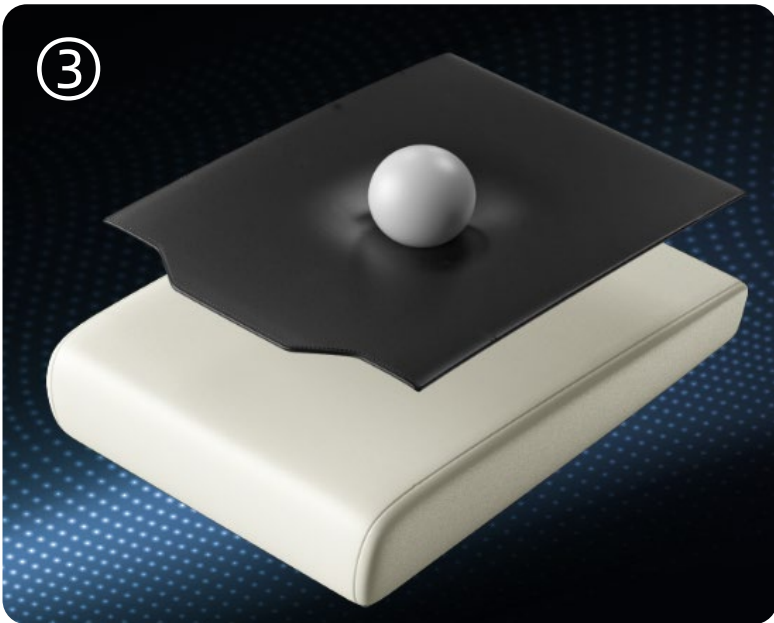
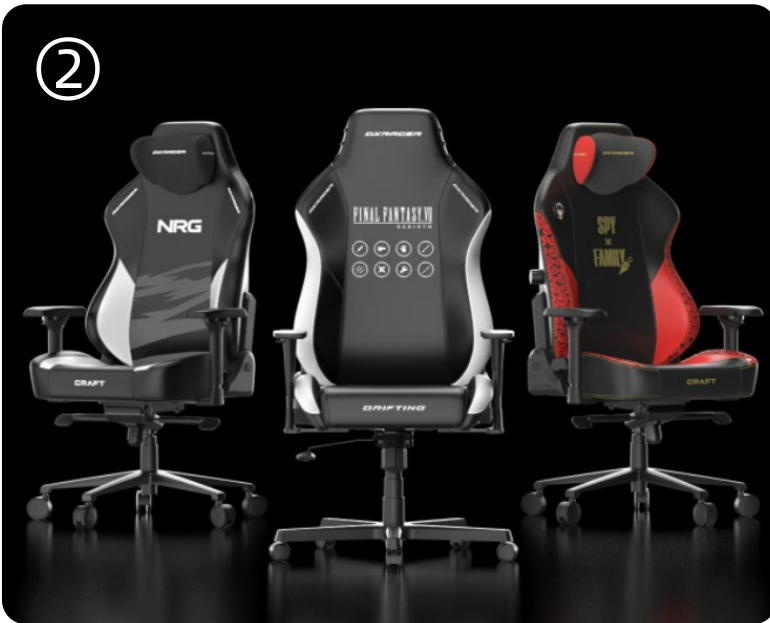
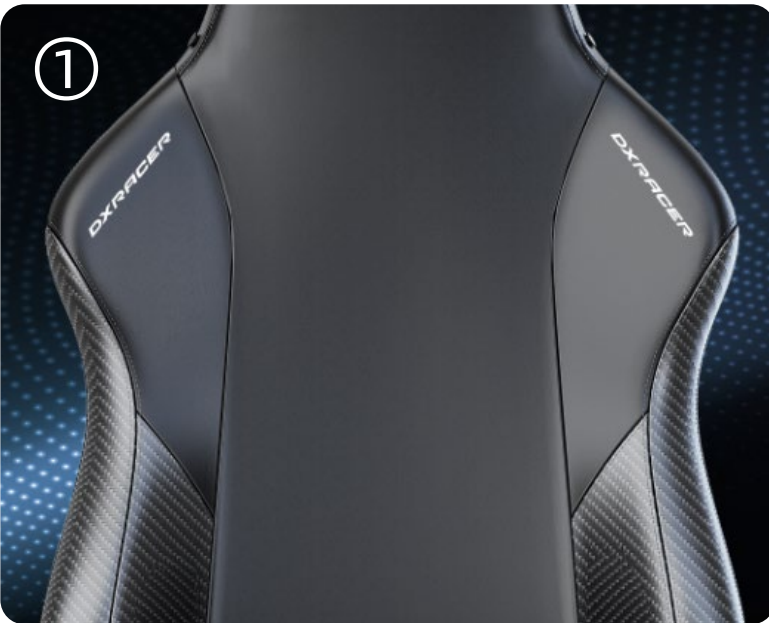
Core Features

The background image is a dark, atmospheric scene of a futuristic industrial facility. In the center, a sleek, silver sports car is positioned on a platform. Above the car, a bright orange-red horizontal light bar glows. The surrounding environment is filled with complex machinery, pipes, and structural elements, creating a sense of depth and scale. The overall color palette is dominated by dark blues, greys, and metallic tones, with the glowing light bar providing a focal point of color.

Supercar-Inspired Gaming Chair

Professional E-Sports Chair for the New Generation

- ① Aerodynamic Streamline Design
- ② Limited Edition IP-Themed Coating
- ③ Ergonomic Pressure Distribution Foam Technology



Supercar-Inspired Gaming Chair

Aerodynamic Streamline Design

- ① 7cm-widened side wings for enhanced lateral support
- ② Supercar-grade EPU leather (Tensile strength $\geq 80\text{N/cm}^2$)
- ③ SGS-certified 20,000 abrasion cycles with zero wear

45%

Improved Lateral Containment



Supercar-Inspired Gaming Chair

Limited Edition IP-
Themed Coating

- 30+ popular designs available (games/anime/esports teams)
- Nano-level UV coating + embroidery detailing
- Colorfastness level 4+ for lasting vibrancy

FINAL FANTASY VII
NRG Esports
SPY×FAMILY



Supercar-Inspired Gaming Chair

Ergonomic Pressure Distribution Foam Technology

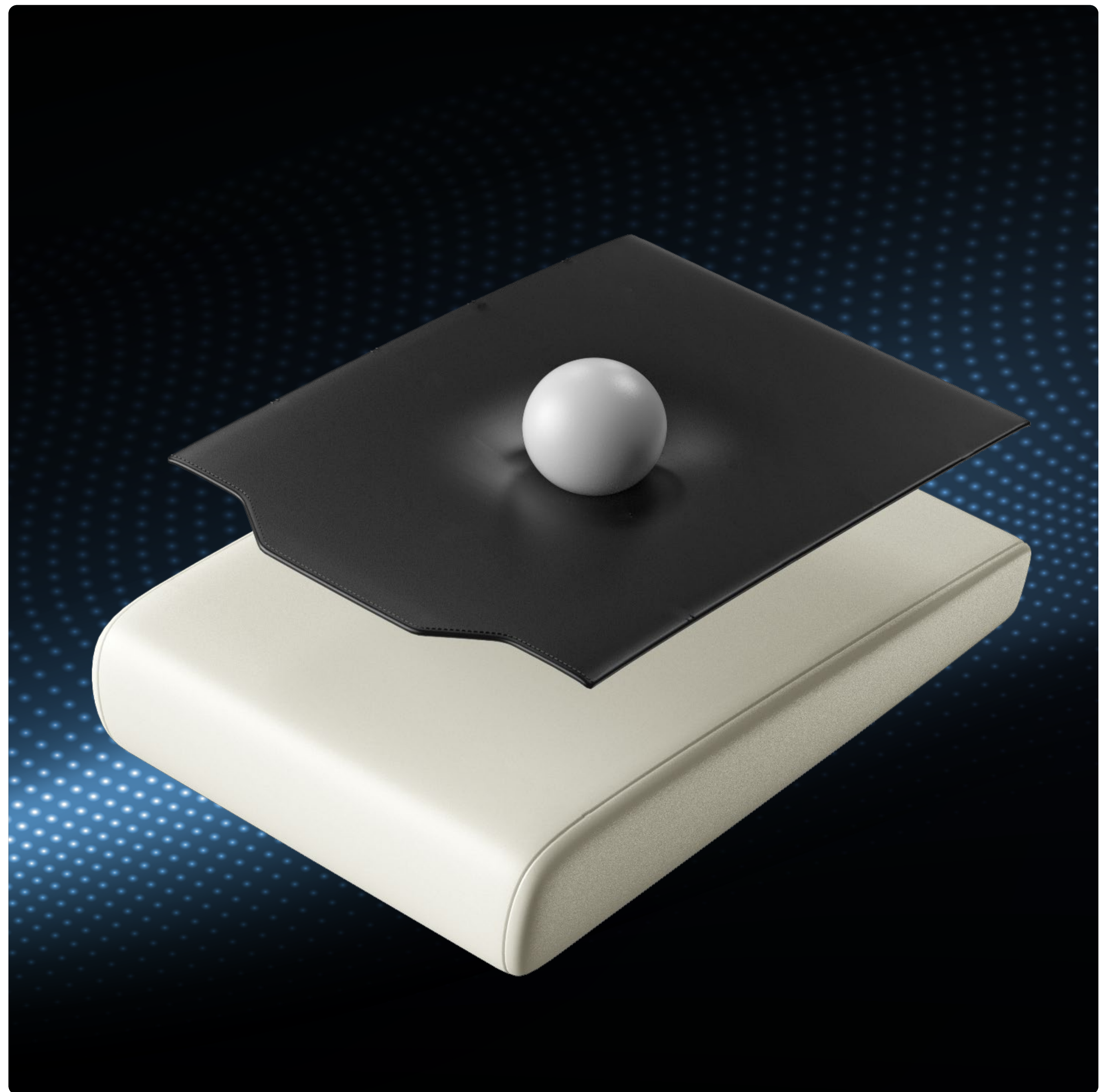
55D high-resilience foam works in conjunction with the 3D curved support system to accurately match body posture. Verified by Tekscan pressure mapping during 4 hours of sitting posture:

55%

Improved Sitting Pressure Distribution Uniformity

38%

Reduction in Peak Pressure



Product Design

The background image is a dark, atmospheric scene of a futuristic industrial facility. In the center, a sleek, silver sports car is parked on a polished floor. Above the car, a glowing orange horizontal light bar is visible. The environment is filled with complex machinery, pipes, and structural elements, creating a sense of depth and scale. The overall color palette is dominated by dark blues, greys, and metallic tones, with the orange light providing a focal point of contrast.

Ergonomic Design

Modular Quick-Installation Mesh Seat Cushion

Provides dual-version replaceable attachments: breathable mesh frame (45CFM airflow) in addition to memory foam (50kg/m³ density).

The mesh seat frame supports 30-second quick installation, reducing seat surface temperature by 5°C~8°C in summer (verified by infrared thermal imaging data).

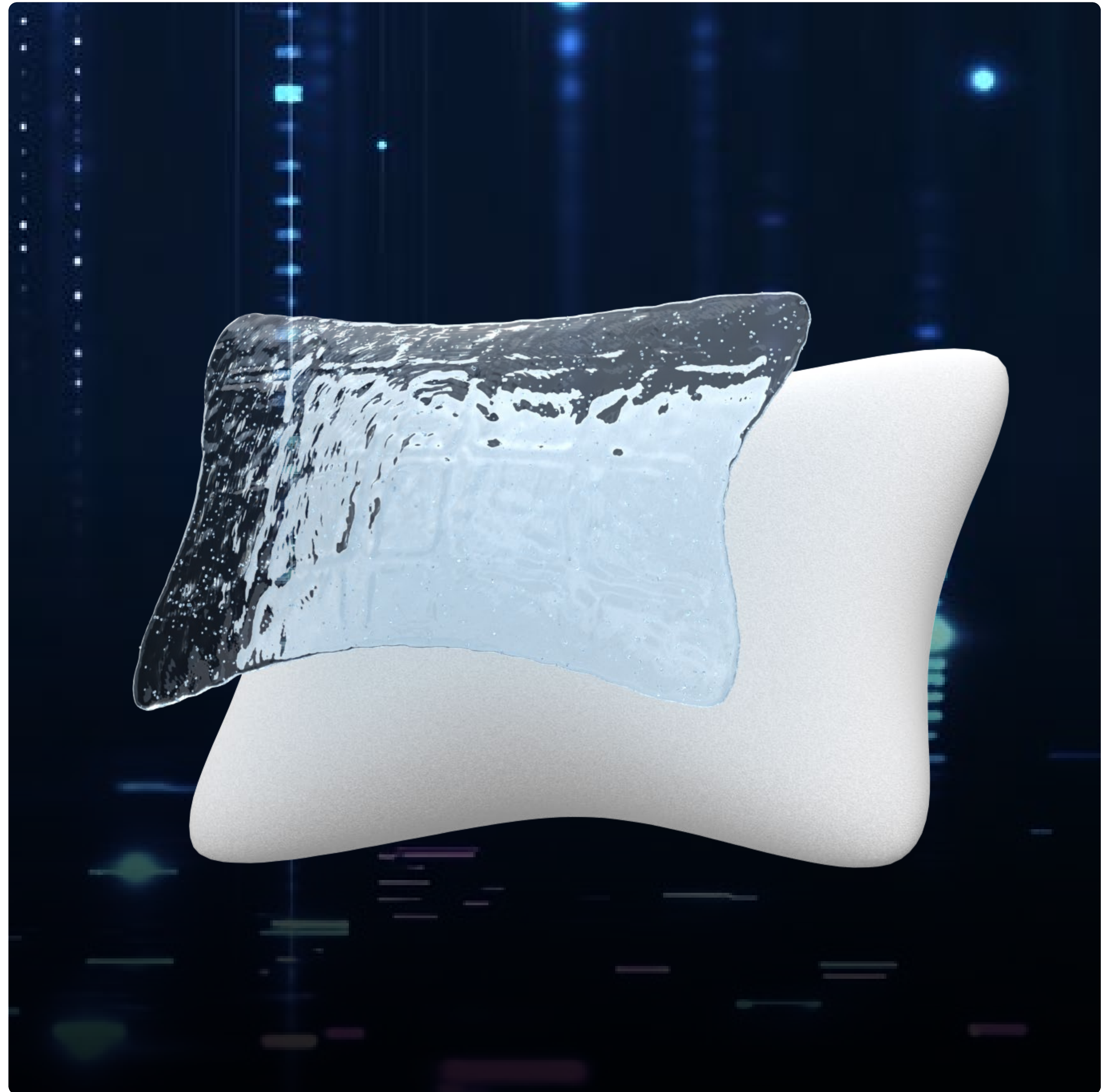
*Mesh seat cushion not included as standard.
Available as separate purchase.



Ergonomic Design

Cooling Gel Foam Headrest

The headrest is made with advanced cooling gel containing chill particles to maintain a consistently cool state.



Ergonomic Design

90°~135° Reclining Backrest

Provides adjustable tilt from 90° to 135° to accommodate sitting preferences. When you want to relax, watch TV, or take a short nap, the reclining mode is the ideal choice.



Ergonomic Design

3D Multi-Function Adjustable Armrest

Featuring height (73mm), front/rear (60mm), and rotation ($\pm 20^\circ$) 3D adjustments.

Surface coated with foamed PU (friction coefficient 0.8) and 10kg load-bearing capacity for robust support.



Product Quality



Racing-Seat-Grade Quality

Racing Technology, Esports Comfort

DXRacer possesses one of the few global certifications for producing FIA-standard products.



DRIFTING | DRIFTING SERIES-CORE FEATURES

Racing-Seat-Grade Quality

Top Choice for Global Esports Players

As the official designated seat brand of major professional leagues, DXRacer is highly favored by professional esports tournaments and unanimously pursued by elite players.



NRG.Demon1



s1mple 2018



IG 2019



XPL PRO LEAGUE

Racing-Seat-Grade Quality

Automotive-Grade
Carbon Steel Frame
Stronger. More Reliable.

DXRacer's complete chairs are BIFMA-certified, delivering robust support



Strict Quality Control

Rigorously Enforces Every Quality Standard

Our products strictly comply with international safety standards, undergoing tens of thousands of tests at every stage to deliver absolute safety and peace of mind.

100K Cycles Seat Durability Test	120K Cycles Backrest Reclining Test	120K Cycles Gas Lift Rotary Fatigue Test
98K Cycles Caster Rotary Endurance Test	60K Cycles Armrest Durability Test	2M Cycles Gas Lift Height Adjustment Test

Certified by Accredited Testing Laboratories:



TÜV Level 4 Certified Gas Lift

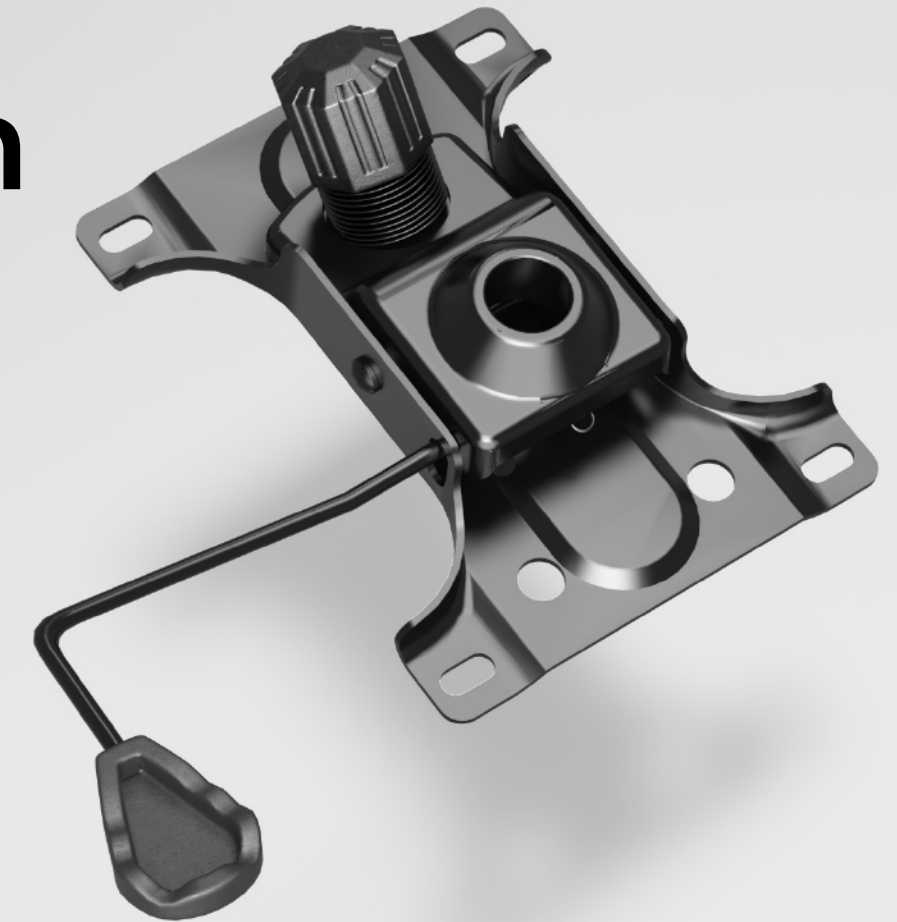
Enhanced Safety Assurance

BIFMA



Butterfly-Design Tray

Combining Reclining
Mode and Height Adjustment.



High-Capacity Aluminum Alloy Five-star Base




60mm Silent Casters- Smooth Gliding & Floor-Friendly



Discover more at
DXRACER official website:

 <https://www.dxracer.com/pages/gaming-chairs/drifting>

 <https://www.youtube.com/@dxracer>

DXRACER